

Massachusetts Water Resources Authority
 3-Year Averaging of CY13, CY14 and CY15 Flows vs. 3-Year Averaging of CY12, CY13 and CY14 Flows
 ESTIMATE of the impact on FY2017 Sewer Assessments Using Averaged Projected CY13-CY15 Flows ^{1,2}

MWRA Sewer Customer	AVERAGE SEWER FLOWS				MAXIMUM MONTH SEWER FLOWS				Projected FY17 BASE Sewer Assessment ^{2,3}			FY16 BASE Sewer Assessment ²			Potential Impact of CY13-15 Flows on FY17 BASE Sewer Assessment									
	CY13 to CY15 Average 12-Month Projection		CY12 to CY14 Average 12 Month Actual		Changes		CY13 to CY15 Average 12-Month Actual		CY12 to CY14 Average 12 Month Actual		Flow Assessment (based on CY13- CY15 Sewer Flows)	Population Assessment	Total Projected FY17 Base Assessment	Flow Assessment (based on CY12- CY14 Sewer Flows)	Population Assessment	Total Base Assessment	Flow Assessment Impact	Population Assessment Impact	Total Projected FY16 Base Assessment Impact					
	mgd	% Share	mgd	% Share	Flow Percent	Flow Share Percent	mgd	% Share	mgd	% Share	Percent	Flow Share	Percent	Flow Percent	Flow Share	Percent	Flow Percent	Flow Share	Percent					
Arlington	4.30	1.45%	4.32	1.46%	-0.4%	-0.9%	6.52	1.61%	5.96	1.59%	9.5%	1.3%	\$3,410,721	\$4,279,149	\$7,689,870	\$3,419,787	\$4,279,149	\$7,698,936	-\$9,066	-0.3%	\$0	0.0%	-\$9,066	-0.1%
Ashland	1.18	0.40%	1.17	0.40%	1.0%	0.5%	1.56	0.38%	1.41	0.38%	10.4%	2.1%	898,892	1,489,741	2,388,633	890,812	1,489,741	2,380,552	8,080	0.9%	0	0.0%	8,080	0.3%
Bedford	2.46	0.83%	2.40	0.81%	2.4%	1.8%	3.54	0.87%	3.12	0.83%	13.2%	4.7%	1,918,108	1,330,107	3,248,216	1,868,902	1,330,107	3,199,010	49,206	2.6%	0	0.0%	49,206	1.5%
Belmont	2.70	0.91%	2.73	0.92%	-1.1%	-1.6%	4.50	1.11%	3.88	1.04%	16.0%	7.3%	2,203,149	2,443,050	4,646,199	2,181,592	2,443,050	4,624,642	21,557	1.0%	0	0.0%	21,557	0.5%
Boston (BWSC)	86.74	29.22%	88.56	29.98%	-2.1%	-2.6%	106.52	26.27%	101.68	27.11%	4.8%	-3.1%	65,115,303	62,776,044	127,891,347	66,918,928	62,776,044	129,694,972	-1,803,626	-2.7%	0	0.0%	-1,803,626	-1.4%
Braintree	6.69	2.25%	6.32	2.14%	5.9%	5.3%	9.89	2.44%	8.35	2.23%	18.4%	9.5%	5,263,963	3,563,389	8,827,353	4,943,522	3,563,389	8,506,912	320,441	6.5%	0	0.0%	320,441	3.8%
Brookline	8.58	2.89%	8.84	2.99%	-3.0%	-3.5%	12.63	3.11%	11.55	3.08%	9.3%	1.1%	6,740,054	5,746,157	12,486,211	6,892,753	5,746,157	12,638,909	-152,698	-2.2%	0	0.0%	-152,698	-1.2%
Burlington	3.20	1.08%	3.16	1.07%	1.4%	0.8%	4.42	1.09%	4.16	1.11%	6.3%	-1.7%	2,464,551	2,444,372	4,908,923	2,460,737	2,444,372	4,905,108	3,814	0.2%	0	0.0%	3,814	0.1%
Cambridge	17.05	5.74%	16.82	5.70%	1.4%	0.9%	19.98	4.93%	20.35	5.43%	-1.8%	-9.2%	12,599,227	10,431,289	23,030,515	12,827,232	10,431,289	23,258,520	-228,005	-1.8%	0	0.0%	-228,005	-1.0%
Canton	2.87	0.97%	2.74	0.93%	4.7%	4.2%	4.11	1.01%	3.62	0.96%	13.5%	5.0%	2,219,945	1,808,486	4,028,431	2,125,289	1,808,486	3,933,775	94,656	4.5%	0	0.0%	94,656	2.4%
Chelsea	4.97	1.67%	4.80	1.62%	3.7%	3.1%	6.21	1.53%	6.09	1.62%	2.1%	-5.6%	3,800,715	3,662,692	7,463,408	3,772,218	3,662,692	7,434,910	28,497	0.8%	0	0.0%	28,497	0.4%
Chelsea	3.48	1.17%	3.39	1.15%	2.6%	2.0%	5.50	1.36%	4.86	1.30%	13.2%	4.7%	2,788,832	2,351,205	5,140,037	2,712,464	2,351,205	5,063,669	76,368	2.8%	0	0.0%	76,368	1.5%
Everett	4.88	1.64%	5.02	1.70%	-2.8%	-3.3%	6.07	1.50%	6.36	1.69%	-4.6%	-11.7%	3,663,701	4,174,614	7,838,315	3,881,432	4,174,614	8,056,046	-217,731	-5.6%	0	0.0%	-217,731	-2.7%
Frammingham	7.45	2.51%	6.74	2.28%	10.5%	9.9%	9.71	2.39%	8.36	2.23%	5,180,759	7,490,372	12,373,113	5,180,759	7,490,372	12,373,113	11,893,511	479,602	9.3%	0	0.0%	479,602	4.0%	
Hingham S.D.	1.31	0.44%	1.24	0.42%	5.6%	5.0%	2.16	0.53%	1.78	0.47%	21.2%	12.1%	1,066,085	699,646	1,765,730	995,355	699,646	1,695,001	70,730	7.1%	0	0.0%	70,730	4.2%
Holbrook	0.88	0.30%	0.85	0.29%	4.4%	3.9%	1.24	0.31%	1.08	0.29%	15.1%	6.5%	686,099	1,001,625	1,687,274	657,008	1,001,625	1,657,601	30,123	4.6%	0	0.0%	30,123	1.8%
Lexington	4.78	1.61%	4.73	1.60%	1.1%	0.6%	7.78	1.92%	7.01	1.87%	10.9%	2.6%	3,871,701	3,143,972	7,015,673	3,825,809	3,143,972	6,969,781	45,892	1.2%	0	0.0%	45,892	0.7%
Malden	8.67	2.92%	8.58	2.90%	1.1%	0.6%	11.69	2.88%	10.49	2.80%	11.4%	3.0%	6,651,666	5,868,418	12,520,084	6,570,008	5,868,418	12,438,426	81,658	1.2%	0	0.0%	81,658	0.7%
Medford	7.64	2.57%	7.46	2.53%	2.4%	1.9%	10.71	2.64%	9.62	2.57%	11.3%	2.9%	5,924,173	5,555,875	11,480,048	5,799,043	5,555,875	11,354,918	125,131	2.2%	0	0.0%	125,131	1.1%
Melrose	4.22	1.42%	4.24	1.44%	-1.0%	-1.0%	6.50	1.60%	5.89	1.57%	10.2%	2.0%	3,358,128	2,690,960	6,049,088	3,363,595	2,690,960	6,054,555	-5,467	-0.2%	0	0.0%	-5,467	-0.1%
Milton	3.08	1.04%	2.93	0.99%	4.8%	4.2%	5.42	1.34%	4.53	1.21%	19.6%	10.6%	2,552,902	2,615,146	5,168,048	2,403,526	2,615,146	5,018,672	149,376	6.2%	0	0.0%	149,376	3.0%
Natick	2.96	1.00%	2.93	0.99%	1.1%	0.5%	4.17	1.03%	3.87	1.03%	7.8%	-0.3%	2,299,740	3,233,215	5,532,956	2,293,180	3,233,215	5,526,395	6,560	0.3%	0	0.0%	6,560	0.1%
Needham	3.35	1.13%	3.28	1.11%	2.3%	1.8%	5.28	1.30%	4.61	1.23%	14.7%	6.1%	2,677,711	2,809,947	5,487,658	2,598,240	2,809,947	5,408,187	79,471	3.1%	0	0.0%	79,471	1.5%
Newton	14.43	4.86%	14.15	4.79%	2.0%	1.4%	21.75	5.36%	19.52	5.20%	11.4%	3.1%	11,416,352	8,505,745	19,922,097	11,203,708	8,505,745	19,709,452	212,644	1.9%	0	0.0%	212,644	1.1%
Norwood	5.08	1.71%	4.92	1.66%	3.3%	2.7%	7.54	1.86%	6.83	1.82%	10.4%	2.1%	4,011,042	2,807,218	6,818,260	3,911,305	2,807,218	6,718,523	99,737	2.5%	0	0.0%	99,737	1.5%
Quincy	13.23	4.45%	13.04	4.42%	1.4%	0.9%	18.14	4.47%	16.15	4.31%	12.3%	3.9%	10,559,658	9,090,516	19,650,175	10,389,607	9,090,516	19,480,123	170,052	1.6%	0	0.0%	170,052	0.9%
Randolph	3.46	1.16%	3.43	1.16%	0.7%	0.2%	5.61	1.38%	4.99	1.33%	12.4%	4.0%	2,796,866	3,251,309	6,048,176	2,760,243	3,251,309	6,011,552	36,624	1.3%	0	0.0%	36,624	0.6%
Reading	2.72	0.92%	2.74	0.93%	-0.7%	-1.3%	4.14	1.02%	3.90	1.04%	6.2%	-1.7%	2,161,069	2,422,566	4,593,635	2,191,593	2,422,566	4,624,160	-30,525	-1.4%	0	0.0%	-30,525	-0.7%
Revere	6.52	2.19%	6.61	2.24%	-1.3%	-1.9%	8.92	2.20%	7.94	2.12%	12.4%	3.9%	5,019,293	5,224,097	10,243,390	5,037,036	5,224,097	10,261,133	-17,744	-0.4%	0	0.0%	-17,744	-0.2%
Stonerville	10.28	3.46%	10.11	3.42%	1.7%	1.2%	13.02	3.21%	13.46	3.59%	-3.3%	-10.6%	7,755,834	7,662,193	15,418,027	7,922,984	7,662,193	15,585,177	-167,151	-2.1%	0	0.0%	-167,151	-1.1%
Stonerville	2.91	0.98%	2.97	1.00%	-1.8%	-2.3%	4.34	1.07%	4.01	1.07%	8.1%	0.0%	2,293,808	2,096,805	4,390,613	2,332,181	2,096,805	4,428,986	-38,373	-1.6%	0	0.0%	-38,373	-0.9%
Stoughton	2.85	0.96%	2.67	0.90%	6.9%	6.3%	4.50	1.11%	3.62	0.96%	24.5%	15.2%	2,289,518	2,288,832	4,578,351	2,103,823	2,288,832	4,392,656	185,695	8.8%	0	0.0%	185,695	4.2%
Wakefield	3.85	1.30%	3.74	1.27%	2.8%	2.3%	6.11	1.51%	5.57	1.49%	9.6%	1.4%	3,091,361	2,532,180	5,623,541	3,030,795	2,532,180	5,562,976	60,565	2.0%	0	0.0%	60,565	1.1%
Walpole	1.89	0.64%	1.86	0.63%	1.6%	1.1%	2.68	0.66%	2.39	0.64%	12.3%	3.8%	1,509,167	2,076,198	3,585,365	1,482,762	2,076,198	3,558,959	26,406	1.8%	0	0.0%	26,406	0.7%
Waltham	8.67	2.92%	8.61	2.92%	0.7%	0.2%	11.98	2.95%	11.01	2.94%	8.8%	0.6%	6,696,380	6,005,550	12,701,930	6,674,193	6,005,550	12,679,743	22,187	0.3%	0	0.0%	22,187	0.2%
Watertown	3.28	1.10%	3.28	1.11%	0.1%	-0.4%	4.58	1.13%	4.26	1.14%	7.5%	-0.6%	2,539,945	3,208,235	5,748,179	2,551,564	3,208,235	5,759,798	-11,619	-0.5%	0	0.0%	-11,619	-0.2%
Wellesley	3.13	1.05%	3.14	1.06%	-0.3%	-0.8%	4.74	1.17%	4.38	1.17%	8.1%	0.0%	2,472,708	2,791,117	5,263,825	2,486,931	2,791,117	5,278,049	-14,224	-0.6%	0	0.0%	-14,224	-0.3%
Westwood	1.38	0.47%	1.32	0.45%	4.7%	4.1%	2.11	0.52%	1.81	0.48%	16.4%	7.6%	1,095,706	1,430,989	2,526,694	1,042,207	1,430,989	2,473,195	53,499	5.1%	0	0.0%	53,499	2.2%
Weymouth	7.53	2.54%	7.26	2.46%	3.7%	3.2%	12.15	3.00%	10.23	2.73%	18.8%	9.9%	6,082,945	5,300,910	11,383,854	5,786,035	5,300,910	11,086,944	296,910	5.1%	0	0.0%	296,910	2.7%
Wilmington	1.25	0.42%	1.22	0.41%	2.7%	2.2%	1.49	0.37%	1.38	0.37%	7.7%	-0.4%	1,144,191	1,346,627	2,490,818	1,130,156	1,346,627	2,476,782	14,035	1.2%	0	0.0%	14,035	0.6%
Winchester	2.14	0.72%	2.11	0.72%	1.3%	0.8%	3.49	0.86%	3.21	0.86%	8.5%	0.4%	1,733,825	2,146,001	3,879,826	1,722,289	2,146,001	3,868,290	11,536	0.7%	0	0.0%	11,536	0.3%
Winthrop	1.90	0.64%	1.90	0.64%	-0.5%	-1.0%	2.42	0.60%	2.24	0.60%	8.1%	0.0%	1,433,596	1,760,951	3,194,547	1,444,196	1,760,951	3,205,146	-10,600	-0.7%	0	0.0%	-10,600	-0.3%
Woburn	6.95	2.34%	7.03	2.38%	-1.1%	-1.7%	9.72	2.40%	9.53	2.54%	2.0%	-5.7%	5,578,677	3,759,568	9,338,245	5,732,902	3,759,568	9,492,470	-154,225	-2.7%	0	0.0%	-154,225	-1.6%
Total	296.90	100.00%	295.35	100.00%	0.5%	0.5%	405.52	100.00%	375.07	100.00%	8.1%	0.0%	\$229,517,667	\$216,549,456	\$446,067,123	\$229,517,667	\$216,549,456	\$446,067,123	\$0	0.0%	\$0	0.0%	\$0	0.0%

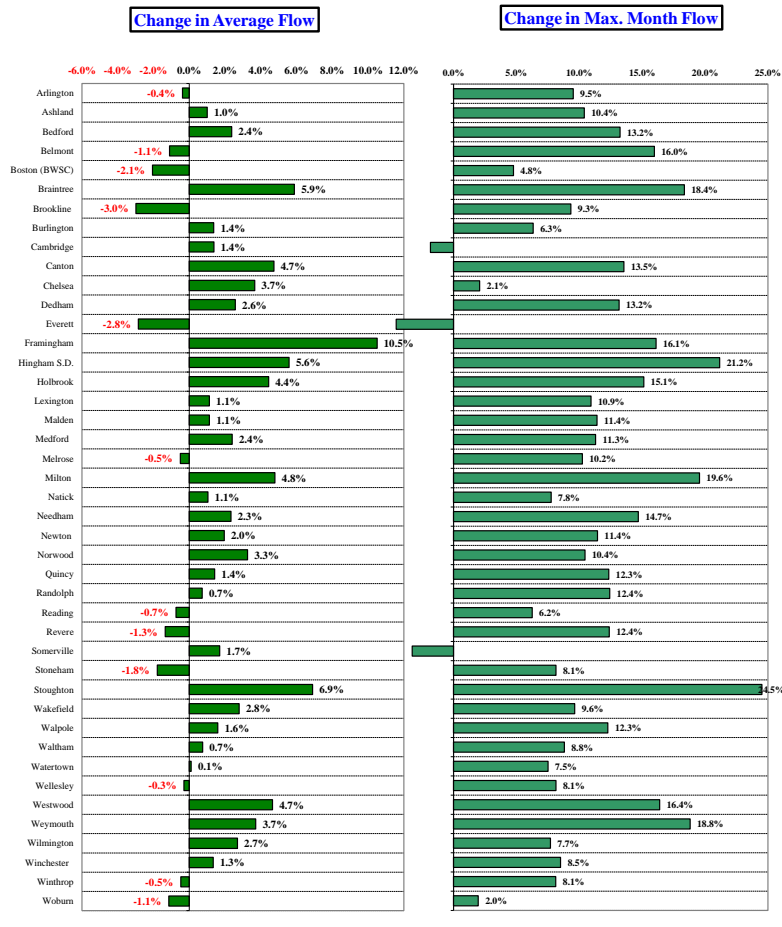
¹ MWRA will utilize a 3-year average of CY13-CY15 wastewater flows to calculate the flow-related components of MWRA's FY17 wholesale sewer assessments. Flow data is preliminary and subject to change pending additional MWRA and community review.

² Does not include prior year assessment adjustments.

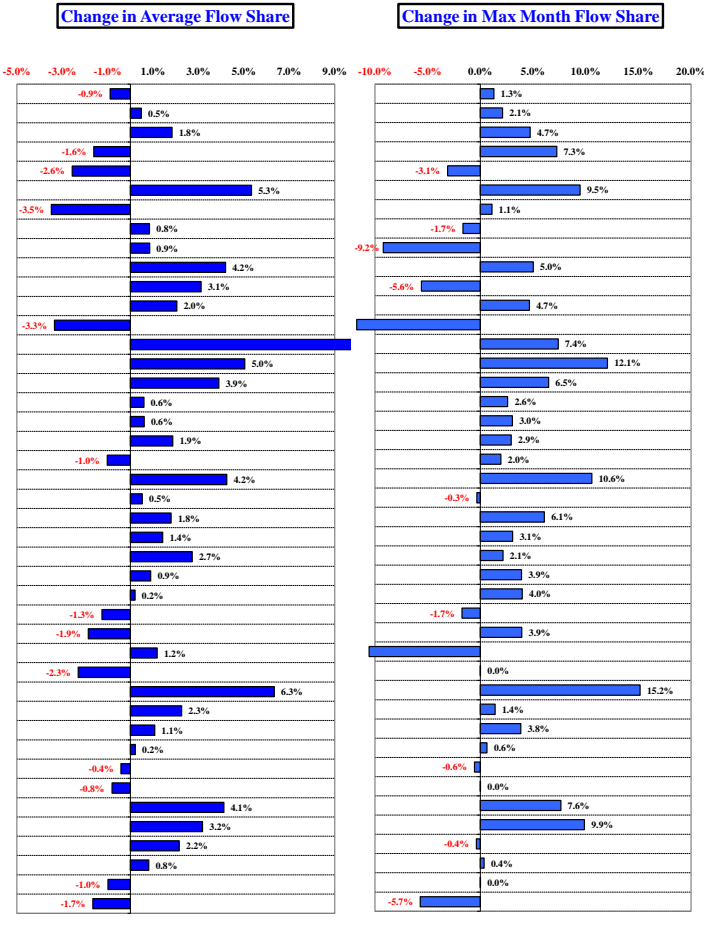
³ Estimated FY17 sewer assessments do not include changes to census and sewerage population or high strength user contributions, and do not include any changes from the FY16 to the FY17 sewer utility budget.

How Projected CY2015 Community Wastewater Flows Could Effect FY2017 Sewer Assessments ^{1,2,3}

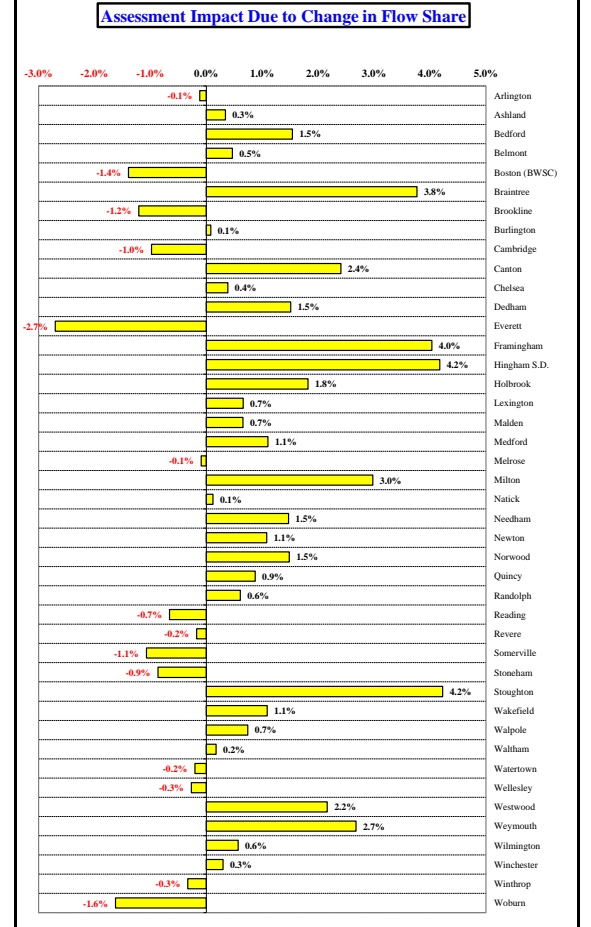
The flow components of FY2017 sewer assessments will be calculated using a 3-year average of CY2013 to CY2015 wastewater flows compared to FY2016 assessments that will use a 3-year average of CY2012 to CY2014 wastewater flows.



But as MWRA's sewer assessments are a ZERO-SUM calculation, a community's assessment is strongly influenced by the **RELATIVE** change in CY2013 to CY2015 flow share compared to CY2012 to CY2014 flow share, compared to all other communities in the system.



The chart below illustrates the change in the TOTAL BASE assessment due to FLOW SHARE CHANGES. ⁴



Notes:

- ¹ MWRA uses a 3-year flow average to calculate sewer assessments. Three-year averaging smoothes the impact of year-to-year changes in community flow share, but does not eliminate the long-term impact of changes in each community's relative contribution to the total flow.
- ² Based on CY2012 to CY2015 average wastewater flows as of 01/29/16. Flow data is preliminary and subject to change pending additional MWRA and community review.
- ³ CY2012 to CY2015 wastewater flows based on actual meter data.
- ⁴ Represents ONLY the impact on the total BASE assessment resulting from the changes in average and maximum wastewater FLOW SHARES.

Massachusetts Water Resources Authority
Average Daily Wastewater Flows (million gallons/day)
THREE YEAR AVERAGE: 2013-2015

MWRA Community	CY2013-2015 Community Average Daily Wastewater Flows ^{1,2}												YEAR TO DATE THRU DECEMBER				ANNUAL			
	Jan	Feb	Mar	Apr	May	Jun	Jul	Aug	Sep	Oct	Nov	Dec	Average Daily Flow	Percent Share of System	Maximum Month Flow	Percent Share of System	Average Daily Flow	Share of System	Maximum Month Flow	Share of System
Arlington	4.99	4.55	6.52	6.37	4.27	4.38	3.44	2.96	2.83	2.98	3.33	5.04	4.30	1.45%	6.52	1.61%	4.30	1.45%	6.52	1.61%
Ashland	1.28	1.20	1.50	1.56	1.22	1.18	0.99	0.97	0.98	1.02	1.06	1.23	1.18	0.40%	1.56	0.38%	1.18	0.40%	1.56	0.38%
Bedford	2.62	2.44	3.35	3.54	2.64	2.64	2.13	1.92	1.85	1.90	1.97	2.50	2.46	0.83%	3.54	0.87%	2.46	0.83%	3.54	0.87%
Belmont	3.04	2.73	4.50	4.09	2.43	2.80	2.19	1.84	1.71	1.76	2.00	3.30	2.70	0.91%	4.50	1.11%	2.70	0.91%	4.50	1.11%
Boston (BWSC)	88.33	91.92	106.52	97.21	81.46	100.00	83.56	73.09	72.28	75.62	78.67	92.73	86.74	29.22%	106.52	26.27%	86.74	29.22%	106.52	26.27%
Braintree	7.47	7.24	9.89	9.77	6.44	7.18	5.41	4.58	4.17	4.67	5.84	7.69	6.69	2.25%	9.89	2.44%	6.69	2.25%	9.89	2.44%
Brookline	9.33	9.39	12.63	11.62	8.04	9.76	7.32	6.11	5.91	6.17	6.96	9.76	8.58	2.89%	12.63	3.11%	8.58	2.89%	12.63	3.11%
Burlington	3.48	3.17	4.39	4.42	3.33	3.50	2.86	2.59	2.38	2.39	2.52	3.43	3.20	1.08%	4.42	1.09%	3.20	1.08%	4.42	1.09%
Cambridge	16.32	17.17	19.98	17.96	15.75	18.95	17.15	14.90	15.08	15.83	16.25	19.31	17.05	5.74%	19.98	4.93%	17.05	5.74%	19.98	4.93%
Canton	3.06	3.03	4.11	3.68	2.66	3.01	2.52	2.30	2.20	2.30	2.50	3.02	2.87	0.97%	4.11	1.01%	2.87	0.97%	4.11	1.01%
Chelsea	4.87	5.33	6.21	5.29	4.53	5.82	4.55	4.07	4.08	4.37	4.74	5.84	4.97	1.67%	6.21	1.53%	4.97	1.67%	6.21	1.53%
Dedham	3.92	3.71	5.50	5.24	3.34	3.84	2.77	2.29	2.13	2.30	2.73	3.96	3.48	1.17%	5.50	1.36%	3.48	1.17%	5.50	1.36%
Everett	5.21	5.10	6.07	5.56	4.47	5.56	4.57	4.10	3.78	4.08	4.28	5.78	4.88	1.64%	6.07	1.50%	4.88	1.64%	6.07	1.50%
Framingham	7.78	7.34	9.68	9.71	7.50	8.29	6.40	5.97	5.87	6.08	6.63	8.19	7.45	2.51%	9.71	2.39%	7.45	2.51%	9.71	2.39%
Hingham S.D.	1.48	1.48	2.16	1.97	1.18	1.42	1.03	0.85	0.75	0.83	1.06	1.57	1.31	0.44%	2.16	0.53%	1.31	0.44%	2.16	0.53%
Holbrook	1.00	0.98	1.24	1.14	0.84	0.88	0.74	0.69	0.67	0.69	0.78	0.97	0.88	0.30%	1.24	0.31%	0.88	0.30%	1.24	0.31%
Lexington	5.18	4.48	7.24	7.78	5.25	5.47	4.14	3.27	3.00	3.03	3.32	5.22	4.78	1.61%	7.78	1.92%	4.78	1.61%	7.78	1.92%
Malden	9.49	9.02	11.69	10.52	8.06	9.42	7.84	6.88	6.54	7.04	7.67	9.93	8.67	2.92%	11.69	2.88%	8.67	2.92%	11.69	2.88%
Medford	8.40	7.98	10.71	10.08	7.36	8.64	7.00	5.77	5.40	5.64	6.24	8.52	7.64	2.57%	10.71	2.64%	7.64	2.57%	10.71	2.64%
Melrose	4.83	4.16	6.50	5.81	3.85	4.52	3.65	2.98	2.67	2.93	3.35	5.34	4.22	1.42%	6.50	1.60%	4.22	1.42%	6.50	1.60%
Milton	3.54	3.35	5.42	5.00	2.72	3.43	2.21	1.72	1.57	1.79	2.37	3.82	3.08	1.04%	5.42	1.34%	3.08	1.04%	5.42	1.34%
Natick	3.25	2.99	4.17	3.96	3.01	3.28	2.55	2.39	2.30	2.28	2.35	3.06	2.96	1.00%	4.17	1.03%	2.96	1.00%	4.17	1.03%
Needham	3.79	3.34	5.28	5.11	3.30	3.67	2.52	2.16	2.24	2.36	2.62	3.83	3.35	1.13%	5.28	1.30%	3.35	1.13%	5.28	1.30%
Newton	16.12	15.13	21.75	21.41	14.61	16.36	11.94	9.87	9.32	9.85	10.85	16.02	14.43	4.86%	21.75	5.36%	14.43	4.86%	21.75	5.36%
Norwood	5.72	5.31	7.53	7.54	4.91	5.66	3.91	3.52	3.25	3.53	4.27	5.79	5.08	1.71%	7.54	1.86%	5.08	1.71%	7.54	1.86%
Quincy	13.86	13.59	18.14	17.05	12.59	14.58	12.33	10.55	10.08	10.38	11.28	14.33	13.23	4.45%	18.14	4.47%	13.23	4.45%	18.14	4.47%
Randolph	3.98	3.77	5.61	5.24	3.26	3.65	2.82	2.40	2.16	2.23	2.69	3.72	3.46	1.16%	5.61	1.38%	3.46	1.16%	5.61	1.38%
Reading	3.11	2.71	4.13	4.14	2.72	2.92	2.23	1.83	1.67	1.88	2.18	3.11	2.72	0.92%	4.14	1.02%	2.72	0.92%	4.14	1.02%
Revere	6.61	6.65	8.92	7.80	5.82	7.61	6.11	5.20	4.91	5.43	5.80	7.36	6.52	2.19%	8.92	2.20%	6.52	2.19%	8.92	2.20%
Somerville	10.10	11.16	12.99	11.29	9.64	12.42	9.26	7.66	8.22	8.53	9.13	13.02	10.28	3.46%	13.02	3.21%	10.28	3.46%	13.02	3.21%
Stoneham	3.45	2.95	4.34	4.11	2.64	3.29	2.40	2.06	1.91	2.07	2.23	3.50	2.91	0.98%	4.34	1.07%	2.91	0.98%	4.34	1.07%
Stoughton	3.08	2.89	4.24	4.50	2.93	3.07	2.27	1.89	1.75	1.93	2.38	3.26	2.85	0.96%	4.50	1.11%	2.85	0.96%	4.50	1.11%
Wakefield	4.34	3.69	6.11	5.83	3.75	4.30	3.21	2.60	2.25	2.49	2.92	4.68	3.85	1.30%	6.11	1.51%	3.85	1.30%	6.11	1.51%
Walpole	2.13	1.98	2.58	2.68	1.92	2.04	1.64	1.41	1.36	1.41	1.56	1.98	1.89	0.64%	2.68	0.66%	1.89	0.64%	2.68	0.66%
Waltham	9.58	8.87	11.98	11.26	8.58	9.58	7.67	6.70	6.58	6.86	7.09	9.33	8.67	2.92%	11.98	2.95%	8.67	2.92%	11.98	2.95%
Watertown	3.61	3.35	4.58	4.25	3.17	3.58	2.89	2.57	2.47	2.49	2.72	3.68	3.28	1.10%	4.58	1.13%	3.28	1.10%	4.58	1.13%
Wellesley	3.43	3.12	4.74	4.70	3.11	3.48	2.42	2.11	2.25	2.34	2.44	3.41	3.13	1.05%	4.74	1.17%	3.13	1.05%	4.74	1.17%
Westwood	1.55	1.43	2.11	2.03	1.32	1.47	1.05	0.95	0.98	1.05	1.16	1.52	1.38	0.47%	2.11	0.52%	1.38	0.47%	2.11	0.52%
Weymouth	8.34	8.74	12.15	10.84	7.05	7.82	5.84	5.03	4.47	5.20	6.39	8.61	7.53	2.54%	12.15	3.00%	7.53	2.54%	12.15	3.00%
Wilmington	1.28	1.23	1.46	1.49	1.25	1.25	1.16	1.15	1.14	1.18	1.18	1.28	1.25	0.42%	1.49	0.37%	1.25	0.42%	1.49	0.37%
Winchester	2.52	2.12	3.49	3.32	2.13	2.37	1.70	1.40	1.30	1.38	1.51	2.46	2.14	0.72%	3.49	0.86%	2.14	0.72%	3.49	0.86%
Winthrop	1.91	1.97	2.42	2.13	1.77	2.18	1.79	1.61	1.53	1.64	1.72	2.09	1.90	0.64%	2.42	0.60%	1.90	0.64%	2.42	0.60%
Woburn	8.06	7.58	9.72	9.10	7.08	7.54	6.22	5.13	4.86	5.25	5.53	7.32	6.95	2.34%	9.72	2.40%	6.95	2.34%	9.72	2.40%
System Total	315.45	310.33	404.23	378.10	283.93	332.81	266.38	230.04	222.82	235.20	254.23	330.52	296.90	100.0%	405.52	100.0%	296.90	100.0%	405.52	100.0%

MWRA Wastewater System Performance: 3-Year Avg. (CY13-CY15) vs. 3-Year Avg. (CY12-CY14)

	Jan	Feb	Mar	Apr	May	Jun	Jul	Aug	Sep	Oct	Nov	Dec	YTD	Annual
CY15 ADF (mgd)	309.80	253.95	403.48	421.08	273.69	284.42	257.20	223.43	224.17	235.13	234.79	265.71	282.37	282.37
CY14 ADF (mgd)	332.68	322.12	349.25	409.57	306.07	257.91	264.79	226.85	212.74	259.52	306.81	457.43	308.83	308.83
CY13 ADF (mgd)	303.86	354.93	459.97	303.66	272.02	456.11	277.16	239.83	231.54	210.96	221.10	268.43	299.48	299.48
CY12 ADF (mgd)	316.84	279.51	281.93	270.97	296.86	287.85	246.67	249.40	252.03	255.59	263.00	331.25	277.75	277.75
3-Year Average (CY13-CY15)	315.45	310.33	404.23	378.10	283.93	332.81	266.38	230.04	222.82	235.20	254.23	330.52	296.90	296.90
3-Year Average (CY12-CY14)	317.79	318.85	363.72	328.07	291.65	333.96	262.87	238.69	232.10	242.02	263.64	352.37	295.35	295.35
3-Yr (13-15) vs. 3-Yr (12-14)	-0.7%	-2.7%	11.1%	15.3%	-2.6%	-0.3%	1.3%	-3.6%	-4.0%	-2.8%	-3.6%	-6.2%	0.5%	0.5%

¹ MWRA will utilize a 3-year average of CY13/CY14/CY15 wastewater flows to calculate the flow-related components of MWRA's FY17 wholesale sewer assessments. Flow data is preliminary and subject

Massachusetts Water Resources Authority
Average Daily Wastewater Flows (million gallons/day)
THREE YEAR AVERAGE: 2012-2014

MWRA Community	CY2012-2014 Community Average Daily Wastewater Flows ^{1,2}												YEAR TO DATE THRU DECEMBER				ANNUAL			
	Jan	Feb	Mar	Apr	May	Jun	Jul	Aug	Sep	Oct	Nov	Dec	Average Daily Flow	Percent Share of System	Maximum Month Flow	Percent Share of System	Average Daily Flow	Share of System	Maximum Month Flow	Share of System
Arlington	5.09	4.86	5.96	5.31	4.42	4.54	3.39	3.17	2.99	3.12	3.57	5.43	4.32	1.46%	5.96	1.59%	4.32	1.46%	5.96	1.59%
Ashland	1.31	1.24	1.41	1.35	1.20	1.15	0.94	0.95	1.00	1.07	1.13	1.29	1.17	0.40%	1.41	0.38%	1.17	0.40%	1.41	0.38%
Bedford	2.65	2.53	3.12	2.98	2.61	2.56	2.04	1.91	1.82	1.93	2.07	2.58	2.40	0.81%	3.12	0.83%	2.40	0.81%	3.12	0.83%
Belmont	3.14	2.94	3.88	3.36	2.63	2.91	2.21	2.06	1.86	1.92	2.22	3.62	2.73	0.92%	3.88	1.04%	2.73	0.92%	3.88	1.04%
Boston (BWSC)	90.62	93.73	97.14	91.10	85.70	101.68	85.60	77.63	78.82	80.06	81.25	99.91	88.56	29.98%	101.68	27.11%	88.56	29.98%	101.68	27.11%
Braintree	7.38	7.41	8.35	7.48	6.26	7.09	5.00	4.65	4.18	4.59	5.82	7.69	6.32	2.14%	8.35	2.23%	6.32	2.14%	8.35	2.23%
Brookline	9.81	10.02	11.55	10.14	8.74	10.18	7.68	6.87	6.43	6.61	7.42	10.68	8.84	2.99%	11.55	3.08%	8.84	2.99%	11.55	3.08%
Burlington	3.50	3.35	4.16	3.80	3.37	3.47	2.74	2.60	2.38	2.42	2.63	3.53	3.16	1.07%	4.16	1.11%	3.16	1.07%	4.16	1.11%
Cambridge	16.15	16.98	17.87	16.62	16.27	18.73	16.78	14.99	15.30	15.94	15.89	20.35	16.82	5.70%	20.35	5.43%	16.82	5.70%	20.35	5.43%
Canton	3.04	3.06	3.62	2.94	2.58	2.91	2.34	2.22	2.14	2.29	2.57	3.15	2.74	0.93%	3.62	0.96%	2.74	0.93%	3.62	0.96%
Chelsea	4.88	5.20	5.30	4.83	4.56	5.49	4.31	4.00	4.02	4.30	4.62	6.09	4.80	1.62%	6.09	1.62%	4.80	1.62%	6.09	1.62%
Dedham	3.87	3.93	4.86	4.17	3.33	3.89	2.65	2.34	2.16	2.31	2.90	4.29	3.39	1.15%	4.86	1.30%	3.39	1.15%	4.86	1.30%
Everett	5.36	5.42	5.65	5.34	4.88	5.78	4.57	4.25	3.95	4.21	4.49	6.36	5.02	1.70%	6.36	1.69%	5.02	1.70%	6.36	1.69%
Framingham	7.10	6.78	8.36	7.76	6.85	7.39	5.58	5.40	5.34	5.83	6.58	7.96	6.74	2.28%	8.36	2.23%	6.74	2.28%	8.36	2.23%
Hingham S.D.	1.44	1.52	1.78	1.51	1.18	1.43	0.96	0.85	0.74	0.82	1.07	1.64	1.24	0.42%	1.78	0.47%	1.24	0.42%	1.78	0.47%
Holbrook	0.93	0.95	1.08	0.94	0.82	0.86	0.68	0.65	0.66	0.70	0.84	1.05	0.85	0.29%	1.08	0.29%	0.85	0.29%	1.08	0.29%
Lexington	5.15	4.91	7.01	6.45	5.27	5.55	3.94	3.33	3.00	3.01	3.59	5.56	4.73	1.60%	7.01	1.87%	4.73	1.60%	7.01	1.87%
Malden	9.40	9.15	10.28	9.29	8.34	9.54	7.77	7.20	6.72	6.94	7.82	10.49	8.58	2.90%	10.49	2.80%	8.58	2.90%	10.49	2.80%
Medford	8.09	7.95	9.38	8.38	7.33	8.50	6.61	5.85	5.47	5.82	6.60	9.62	7.46	2.53%	9.62	2.57%	7.46	2.53%	9.62	2.57%
Melrose	4.81	4.38	5.76	4.81	4.02	4.74	3.60	3.18	2.86	3.11	3.69	5.89	4.24	1.44%	5.89	1.57%	4.24	1.44%	5.89	1.57%
Milton	3.48	3.43	4.53	3.72	2.77	3.43	2.03	1.78	1.62	1.85	2.50	4.10	2.93	0.99%	4.53	1.21%	2.93	0.99%	4.53	1.21%
Natick	3.33	3.12	3.87	3.48	3.03	3.27	2.50	2.31	2.27	2.28	2.55	3.22	2.93	0.99%	3.87	1.03%	2.93	0.99%	3.87	1.03%
Needham	3.74	3.47	4.61	4.04	3.40	3.77	2.57	2.32	2.37	2.34	2.75	3.94	3.28	1.11%	4.61	1.23%	3.28	1.11%	4.61	1.23%
Newton	17.04	16.04	19.52	16.89	14.37	16.12	11.44	10.23	9.45	9.92	11.45	17.42	14.15	4.79%	19.52	5.20%	14.15	4.79%	19.52	5.20%
Norwood	5.52	5.53	6.83	5.89	4.81	5.58	3.81	3.55	3.32	3.60	4.56	6.02	4.92	1.66%	6.83	1.82%	4.92	1.66%	6.83	1.82%
Quincy	13.80	13.96	16.15	14.79	12.83	14.97	12.03	10.91	10.26	10.47	11.53	14.85	13.04	4.42%	16.15	4.31%	13.04	4.42%	16.15	4.31%
Randolph	3.99	4.02	4.99	4.20	3.39	3.80	2.74	2.43	2.22	2.36	3.00	4.09	3.43	1.16%	4.99	1.33%	3.43	1.16%	4.99	1.33%
Reading	3.16	2.92	3.90	3.46	2.83	2.97	2.22	1.94	1.78	1.99	2.35	3.36	2.74	0.93%	3.90	1.04%	2.74	0.93%	3.90	1.04%
Revere	6.83	7.02	7.79	7.20	6.23	7.79	6.30	5.59	5.17	5.50	5.95	7.94	6.61	2.24%	7.94	2.12%	6.61	2.24%	7.94	2.12%
Somerville	10.22	11.21	11.39	10.47	10.36	11.74	8.87	7.72	8.14	8.73	9.03	13.46	10.11	3.42%	13.46	3.59%	10.11	3.42%	13.46	3.59%
Stoneham	3.41	3.20	4.01	3.39	2.88	3.43	2.47	2.18	2.01	2.16	2.50	3.95	2.97	1.00%	4.01	1.07%	2.97	1.00%	4.01	1.07%
Stoughton	2.82	2.84	3.62	3.47	2.84	3.03	2.16	1.88	1.79	1.89	2.42	3.24	2.67	0.90%	3.62	0.96%	2.67	0.90%	3.62	0.96%
Wakefield	4.18	3.89	5.57	4.63	3.80	4.26	3.07	2.63	2.27	2.50	3.11	4.99	3.74	1.27%	5.57	1.49%	3.74	1.27%	5.57	1.49%
Walpole	2.11	2.01	2.39	2.24	1.87	2.01	1.56	1.43	1.38	1.45	1.74	2.13	1.86	0.63%	2.39	0.64%	1.86	0.63%	2.39	0.64%
Waltham	9.54	9.19	11.01	9.64	8.79	9.42	7.54	7.03	6.74	6.93	7.54	9.97	8.61	2.92%	11.01	2.94%	8.61	2.92%	11.01	2.94%
Watertown	3.66	3.57	4.26	3.72	3.18	3.60	2.80	2.66	2.53	2.59	2.85	3.90	3.28	1.11%	4.26	1.14%	3.28	1.11%	4.26	1.14%
Wellesley	3.55	3.36	4.38	3.87	3.27	3.53	2.39	2.18	2.31	2.40	2.70	3.72	3.14	1.06%	4.38	1.17%	3.14	1.06%	4.38	1.17%
Westwood	1.53	1.46	1.81	1.53	1.23	1.45	1.02	0.96	0.97	1.06	1.25	1.60	1.32	0.45%	1.81	0.48%	1.32	0.45%	1.81	0.48%
Weymouth	8.29	8.84	10.23	8.45	6.94	7.89	5.44	5.22	4.68	5.36	6.76	9.15	7.26	2.46%	10.23	2.73%	7.26	2.46%	10.23	2.73%
Wilmington	1.26	1.24	1.38	1.32	1.28	1.22	1.09	1.13	1.11	1.17	1.17	1.27	1.22	0.41%	1.38	0.37%	1.22	0.41%	1.38	0.37%
Winchester	2.50	2.27	3.21	2.67	2.17	2.41	1.63	1.44	1.34	1.39	1.62	2.71	2.11	0.72%	3.21	0.86%	2.11	0.72%	3.21	0.86%
Winthrop	1.98	2.05	2.21	2.03	1.84	2.24	1.79	1.65	1.54	1.64	1.75	2.16	1.90	0.64%	2.24	0.60%	1.90	0.64%	2.24	0.60%
Woburn	8.12	7.90	9.53	8.39	7.19	7.63	6.03	5.44	5.01	5.40	5.77	7.96	7.03	2.38%	9.53	2.54%	7.03	2.38%	9.53	2.54%
System Total	317.79	318.85	363.72	328.07	291.65	333.96	262.87	238.69	232.10	242.02	263.64	352.37	295.35	100.0%	375.07	100.0%	295.35	100.0%	375.07	100.0%

MWRA Wastewater System Performance: 3-Year Avg. (CY12-CY14) vs. 3-Year Avg. (CY11-CY13)

	Jan	Feb	Mar	Apr	May	Jun	Jul	Aug	Sep	Oct	Nov	Dec	YTD	Annual
CY14 ADF (mgd)	332.68	322.12	349.25	409.57	306.07	257.91	264.79	226.85	212.74	259.52	306.81	457.43	308.83	308.83
CY13 ADF (mgd)	303.86	354.93	459.97	303.66	272.02	456.11	277.16	239.83	231.54	210.96	221.10	268.43	299.48	299.48
CY12 ADF (mgd)	316.84	279.51	281.93	270.97	296.86	287.85	246.67	249.40	252.03	255.59	263.00	331.25	277.75	277.75
CY11 ADF (mgd)	293.05	389.02	465.74	390.15	318.07	293.94	245.47	326.34	339.93	425.38	389.64	385.48	354.93	354.93
3-Year Average (CY12-CY14)	317.79	318.85	363.72	328.07	291.65	333.96	262.87	238.69	232.10	242.02	263.64	352.37	295.35	295.35
3-Year Average (CY11-CY13)	304.58	341.15	402.55	321.59	295.65	345.97	256.43	271.86	274.50	297.31	291.25	328.39	310.72	310.72
3-Yr (12-14) vs. 3-Yr (11-13)	4.3%	-6.5%	-9.6%	2.0%	-1.4%	-3.5%	2.5%	-12.2%	-15.4%	-18.6%	-9.5%	7.3%	-4.9%	-4.9%

¹ MWRA utilized a 3-year average of CY12/CY13/CY14 wastewater flows to calculate the flow-related components of MWRA's FY16 wholesale sewer assessments. Flow data is preliminary and subject to

Massachusetts Water Resources Authority
 Average Daily Wastewater Flows (million gallons/day)
CALENDAR YEAR: 2015

MWRA Community	CY2015 Community Average Daily Wastewater Flows ¹												YEAR TO DATE THRU DECEMBER				ANNUAL TOTALS ¹			
	Jan	Feb	Mar	Apr	May	Jun	Jul	Aug	Sep	Oct	Nov	Dec	Average Daily Flow	Percent Share of System	Maximum Month Flow	Percent Share of System	Average Daily Flow	Share of System	Maximum Month Flow	Share of System
Arlington	4.94	3.79	6.39	7.12	4.09	3.77	3.23	2.63	2.62	3.07	3.17	3.76	4.05	1.43%	7.12	1.64%	4.05	1.43%	7.12	1.64%
Ashland	1.22	1.09	1.44	1.67	1.15	1.10	1.02	0.93	0.94	0.99	1.00	1.08	1.14	0.40%	1.67	0.38%	1.14	0.40%	1.67	0.38%
Bedford	2.71	2.41	3.32	4.02	2.59	2.44	2.16	1.88	1.83	1.89	1.87	2.06	2.43	0.86%	4.02	0.93%	2.43	0.86%	4.02	0.93%
Belmont	3.05	2.14	4.36	4.48	2.23	2.33	2.00	1.52	1.50	1.72	1.83	2.25	2.45	0.87%	4.48	1.03%	2.45	0.87%	4.48	1.03%
Boston (BWSC)	85.28	75.10	108.41	103.35	76.62	86.68	79.40	72.07	71.92	72.34	71.05	79.92	81.89	29.00%	108.41	24.97%	81.89	29.00%	108.41	24.97%
Braintree	7.21	5.66	10.82	12.32	6.66	6.00	5.73	4.68	4.38	4.96	5.54	6.36	6.70	2.37%	12.32	2.84%	6.70	2.37%	12.32	2.84%
Brookline	8.45	7.02	12.45	12.72	7.37	7.59	6.57	5.02	5.61	5.85	5.88	6.79	7.61	2.70%	12.72	2.93%	7.61	2.70%	12.72	2.93%
Burlington	3.62	2.89	4.07	4.85	3.23	3.12	2.74	2.40	2.31	2.37	2.40	2.81	3.07	1.09%	4.85	1.12%	3.07	1.09%	4.85	1.12%
Cambridge	16.24	14.45	20.62	19.07	14.79	17.67	16.08	14.35	15.38	16.33	15.07	16.56	16.40	5.81%	20.62	4.75%	16.40	5.81%	20.62	4.75%
Canton	2.73	2.29	3.70	4.45	2.63	2.46	2.40	2.13	2.22	2.21	2.24	2.36	2.65	0.94%	4.45	1.03%	2.65	0.94%	4.45	1.03%
Chelsea	4.75	4.28	6.85	5.67	4.45	5.79	4.63	4.13	4.43	4.35	4.18	5.17	4.89	1.73%	6.85	1.58%	4.89	1.73%	6.85	1.58%
Dedham	3.59	2.59	5.12	6.01	3.26	2.64	2.70	2.25	2.09	2.24	2.43	2.62	3.13	1.11%	6.01	1.38%	3.13	1.11%	6.01	1.38%
Everett	5.19	4.17	6.61	5.93	4.41	4.80	4.45	3.94	4.06	4.08	3.85	4.50	4.67	1.65%	6.61	1.52%	4.67	1.65%	6.61	1.52%
Framingham	8.58	7.51	9.84	11.27	7.82	7.85	7.03	6.39	6.29	6.63	6.71	7.44	7.78	2.76%	11.27	2.60%	7.78	2.76%	11.27	2.60%
Hingham S.D.	1.44	1.03	2.30	2.33	1.16	1.05	1.03	0.81	0.81	0.88	0.98	1.18	1.25	0.44%	2.33	0.54%	1.25	0.44%	2.33	0.54%
Holbrook	0.97	0.79	1.20	1.28	0.80	0.76	0.77	0.68	0.66	0.67	0.69	0.80	0.84	0.30%	1.28	0.29%	0.84	0.30%	1.28	0.29%
Lexington	5.72	3.89	5.70	8.35	5.01	4.39	3.87	2.94	3.05	3.41	3.40	3.83	4.46	1.58%	8.35	1.92%	4.46	1.58%	8.35	1.92%
Malden	9.43	7.91	12.56	11.57	7.75	8.27	7.72	6.60	6.54	7.50	7.40	8.25	8.46	3.00%	12.56	2.89%	8.46	3.00%	12.56	2.89%
Medford	8.58	6.72	10.92	11.78	7.67	7.93	7.17	5.67	5.51	5.81	5.82	6.20	7.48	2.65%	11.78	2.71%	7.48	2.65%	11.78	2.71%
Melrose	4.75	3.14	6.30	6.57	3.75	3.51	3.36	2.66	2.53	2.81	2.92	3.53	3.82	1.35%	6.57	1.51%	3.82	1.35%	6.57	1.51%
Milton	3.47	2.42	5.37	6.18	2.60	2.29	2.32	1.61	1.51	1.62	1.79	2.23	2.79	0.99%	6.18	1.42%	2.79	0.99%	6.18	1.42%
Natick	3.10	2.55	3.83	4.07	2.85	2.68	2.48	2.51	2.28	2.37	2.26	2.57	2.80	0.99%	4.07	0.94%	2.80	0.99%	4.07	0.94%
Needham	3.53	2.69	5.03	6.01	3.15	2.70	2.32	1.98	2.00	2.42	2.69	3.03	3.13	1.11%	6.01	1.38%	3.13	1.11%	6.01	1.38%
Newton	15.89	12.71	21.61	26.39	15.32	13.50	12.05	9.99	9.73	11.22	11.42	12.34	14.35	5.08%	26.39	6.08%	14.35	5.08%	26.39	6.08%
Norwood	5.61	3.85	6.91	8.96	4.95	4.29	3.58	3.29	2.97	3.33	3.64	4.34	4.65	1.65%	8.96	2.06%	4.65	1.65%	8.96	2.06%
Quincy	13.77	11.12	18.11	18.69	12.10	11.62	11.88	10.06	9.56	10.02	10.19	11.04	12.35	4.38%	18.69	4.31%	12.35	4.38%	18.69	4.31%
Randolph	3.77	2.69	5.30	6.20	3.03	2.73	2.85	2.38	2.17	1.95	2.06	2.37	3.13	1.11%	6.20	1.43%	3.13	1.11%	6.20	1.43%
Reading	3.10	2.22	3.65	4.50	2.52	2.44	2.03	1.61	1.52	1.76	1.93	2.23	2.46	0.87%	4.50	1.04%	2.46	0.87%	4.50	1.04%
Revere	6.25	4.82	9.66	8.06	5.46	6.54	5.69	4.86	5.07	5.52	5.11	6.22	6.11	2.17%	9.66	2.23%	6.11	2.17%	9.66	2.23%
Somerville	9.98	8.07	13.77	12.04	8.45	11.93	9.04	7.78	9.72	8.57	8.43	11.19	9.92	3.51%	13.77	3.17%	9.92	3.51%	13.77	3.17%
Stoneham	3.41	2.28	3.91	4.75	2.53	2.45	2.05	1.75	1.67	1.94	1.92	2.21	2.57	0.91%	4.75	1.09%	2.57	0.91%	4.75	1.09%
Stoughton	3.52	2.78	4.61	5.40	2.92	2.49	2.29	1.92	1.65	1.91	2.06	2.43	2.83	1.00%	5.40	1.24%	2.83	1.00%	5.40	1.24%
Wakefield	4.72	3.22	5.52	6.78	3.73	3.60	2.99	2.43	2.21	2.54	2.61	3.08	3.62	1.28%	6.78	1.56%	3.62	1.28%	6.78	1.56%
Walpole	2.05	1.71	2.28	2.97	1.91	1.67	1.55	1.31	1.34	1.42	1.46	1.55	1.77	0.63%	2.97	0.68%	1.77	0.63%	2.97	0.68%
Waltham	9.58	7.89	11.61	12.82	8.16	8.54	7.34	6.58	6.70	7.37	6.89	7.44	8.41	2.98%	12.82	2.95%	8.41	2.98%	12.82	2.95%
Watertown	3.51	2.74	4.35	4.51	3.19	3.10	2.88	2.51	2.53	2.56	2.66	2.98	3.13	1.11%	4.51	1.04%	3.13	1.11%	4.51	1.04%
Wellesley	3.30	2.57	4.27	5.38	2.92	2.63	2.32	2.09	2.16	2.42	2.35	2.57	2.92	1.03%	5.38	1.24%	2.92	1.03%	5.38	1.24%
Westwood	1.52	1.22	2.22	2.64	1.59	1.22	1.11	0.98	0.95	1.01	1.04	1.15	1.39	0.49%	2.64	0.61%	1.39	0.49%	2.64	0.61%
Weymouth	7.87	6.65	13.03	13.54	7.36	6.62	6.60	5.23	4.88	5.52	6.22	6.77	7.53	2.67%	13.54	3.12%	7.53	2.67%	13.54	3.12%
Wilmington	1.34	1.23	1.52	1.63	1.27	1.28	1.24	1.22	1.14	1.17	1.18	1.13	1.28	0.45%	1.63	0.38%	1.28	0.45%	1.63	0.38%
Winchester	2.57	1.76	2.97	3.72	2.02	1.81	1.57	1.32	1.27	1.45	1.49	1.69	1.97	0.70%	3.72	0.86%	1.97	0.70%	3.72	0.86%
Winthrop	1.88	1.58	2.50	2.25	1.68	1.88	1.72	1.60	1.65	1.65	1.64	1.91	1.83	0.65%	2.50	0.58%	1.83	0.65%	2.50	0.58%
Woburn	7.61	6.31	8.47	8.78	6.54	6.26	5.24	4.74	4.81	5.28	5.32	5.77	6.26	2.22%	8.78	2.02%	6.26	2.22%	8.78	2.02%
System Total	309.80	253.95	403.48	421.08	273.69	284.42	257.20	223.43	224.17	235.13	234.79	265.71	282.37	100.0%	434.12	100.0%	282.37	100.0%	434.12	100.0%

MWRA Wastewater System Performance: CY15 vs. CY14

	Jan	Feb	Mar	Apr	May	Jun	Jul	Aug	Sep	Oct	Nov	Dec	YTD	Annual
CY15 ADF (mgd)	309.80	253.95	403.48	421.08	273.69	284.42	257.20	223.43	224.17	235.13	234.79	265.71	282.37	282.37
CY14 ADF (mgd)	332.68	322.12	349.25	409.57	306.07	257.91	264.79	226.85	212.74	259.52	306.81	457.43	308.83	308.83
Change CY15 vs CY14	-6.9%	-21.2%	15.5%	2.8%	-10.6%	10.3%	-2.9%	-1.5%	5.4%	-9.4%	-23.5%	-41.9%	-8.6%	-8.6%
CY15 Rainfall (inches)	2.94	2.94	2.89	2.51	1.69	5.29	2.39	2.73	4.18	2.15	2.39	4.40	36.50	36.50
CY14 Rainfall (inches)	2.52	3.97	4.63	3.55	3.01	2.59	5.30	2.45	0.87	6.73	5.16	7.43	48.22	48.22
Change CY15 vs CY14	16.6%	-26.1%	-37.6%	-29.3%	-43.8%	104.1%	-54.9%	11.4%	381.2%	-68.0%	-53.7%	-40.7%	-24.3%	-24.3%

¹ Flow data is preliminary and subject to change pending additional MWRA and community review.

Massachusetts Water Resources Authority
Average Daily Wastewater Flows (million gallons/day)
CALENDAR YEAR: 2014

MWRA Community	CY2014 Community Average Daily Wastewater Flows ¹												YEAR TO DATE THRU DECEMBER				ANNUAL TOTALS ¹			
	Jan	Feb	Mar	Apr	May	Jun	Jul	Aug	Sep	Oct	Nov	Dec	Average Daily Flow	Percent Share of System	Maximum Month Flow	Percent Share of System	Average Daily Flow	Share of System	Maximum Month Flow	Share of System
Arlington	4.98	4.78	5.77	7.29	4.90	3.54	3.56	3.10	2.94	3.21	4.04	7.81	4.66	1.51%	7.81	1.70%	4.66	1.51%	7.81	1.70%
Ashland	1.30	1.19	1.31	1.73	1.36	0.98	0.86	0.92	0.93	1.00	1.08	1.47	1.18	0.38%	1.73	0.38%	1.18	0.38%	1.73	0.38%
Bedford	2.59	2.41	3.11	3.84	2.99	2.33	2.05	1.89	1.86	1.97	2.22	3.40	2.56	0.83%	3.84	0.84%	2.56	0.83%	3.84	0.84%
Belmont	2.95	2.61	3.73	4.81	2.90	2.23	2.34	1.95	1.82	2.03	2.52	5.43	2.95	0.95%	5.43	1.18%	2.95	0.95%	5.43	1.18%
Boston (BWSC)	95.03	94.14	95.07	103.62	85.71	78.47	84.44	71.14	66.33	84.84	89.71	114.60	88.59	28.69%	114.60	24.95%	88.59	28.69%	114.60	24.95%
Braintree	8.77	8.20	7.85	9.78	6.77	5.30	4.52	4.05	3.70	4.93	7.68	10.58	6.84	2.21%	10.58	2.30%	6.84	2.21%	10.58	2.30%
Brookline	10.92	10.99	11.78	13.17	9.21	7.61	7.48	6.19	5.27	6.47	8.47	14.04	9.29	3.01%	14.04	3.06%	9.29	3.01%	14.04	3.06%
Burlington	3.36	3.15	4.02	4.77	3.65	2.96	2.77	2.53	2.36	2.48	2.90	4.90	3.32	1.08%	4.90	1.07%	3.32	1.08%	4.90	1.07%
Cambridge	17.39	17.35	18.55	19.04	16.18	15.70	18.32	15.43	15.67	18.41	19.39	25.04	18.05	5.84%	25.04	5.45%	18.05	5.84%	25.04	5.45%
Canton	3.70	3.64	3.98	3.88	2.78	2.30	2.26	2.03	1.96	2.42	2.92	3.92	2.98	0.96%	3.98	0.87%	2.98	0.96%	3.98	0.87%
Chelsea	5.77	5.69	5.69	5.83	4.74	4.01	4.46	3.84	4.01	5.36	5.97	6.99	5.20	1.68%	6.99	1.52%	5.20	1.68%	6.99	1.52%
Dedham	4.34	4.23	4.84	6.15	3.88	2.88	2.69	2.16	1.86	2.51	3.66	6.31	3.79	1.23%	6.31	1.37%	3.79	1.23%	6.31	1.37%
Everett	5.61	5.57	5.28	6.09	4.27	4.73	4.49	3.94	3.26	4.02	4.81	7.71	4.98	1.61%	7.71	1.68%	4.98	1.61%	7.71	1.68%
Framingham	7.27	6.94	8.10	9.73	7.70	6.82	5.97	5.88	5.76	6.15	7.70	10.94	7.42	2.40%	10.94	2.38%	7.42	2.40%	10.94	2.38%
Hingham S.D.	1.66	1.77	1.54	2.24	1.35	1.01	0.89	0.73	0.68	0.90	1.47	2.43	1.39	0.45%	2.43	0.53%	1.39	0.45%	2.43	0.53%
Holbrook	1.03	1.03	1.04	1.17	0.88	0.72	0.67	0.64	0.64	0.75	0.96	1.27	0.90	0.29%	1.27	0.28%	0.90	0.29%	1.27	0.28%
Lexington	4.69	4.37	6.20	8.74	6.04	4.26	3.93	3.46	3.03	3.07	3.90	8.70	5.04	1.63%	8.74	1.90%	5.04	1.63%	8.74	1.90%
Malden	9.81	9.19	9.74	11.29	8.90	7.85	8.30	7.26	6.72	7.59	9.45	13.64	9.15	2.96%	13.64	2.97%	9.15	2.96%	13.64	2.97%
Medford	8.69	8.37	9.09	10.72	7.72	6.26	7.15	5.98	5.43	6.31	7.85	12.62	8.02	2.60%	12.62	2.75%	8.02	2.60%	12.62	2.75%
Melrose	5.01	4.49	4.79	6.68	4.44	3.64	4.09	3.48	2.85	3.52	4.71	9.05	4.73	1.53%	9.05	1.97%	4.73	1.53%	9.05	1.97%
Milton	4.04	3.77	4.22	5.47	3.01	2.11	1.84	1.48	1.33	2.06	3.57	6.54	3.28	1.06%	6.54	1.42%	3.28	1.06%	6.54	1.42%
Natick	3.36	3.08	3.89	4.58	3.43	2.75	2.42	2.32	2.18	2.35	2.73	4.06	3.10	1.00%	4.58	1.00%	3.10	1.00%	4.58	1.00%
Needham	4.12	3.45	4.42	5.62	3.84	2.82	2.44	2.16	2.13	2.41	3.00	5.41	3.49	1.13%	5.62	1.22%	3.49	1.13%	5.62	1.22%
Newton	15.30	14.45	18.16	23.50	16.27	12.28	11.25	9.57	8.85	10.11	12.94	24.53	14.77	4.78%	24.53	5.34%	14.77	4.78%	24.53	5.34%
Norwood	6.17	5.94	6.66	8.49	5.30	4.29	3.93	3.49	3.10	4.13	5.83	8.45	5.48	1.77%	8.49	1.85%	5.48	1.77%	8.49	1.85%
Quincy	15.18	14.81	14.92	18.65	13.48	11.70	11.38	10.12	10.09	11.54	14.19	20.02	13.83	4.48%	20.02	4.36%	13.83	4.48%	20.02	4.36%
Randolph	4.39	4.27	4.40	5.68	3.63	2.73	2.39	2.04	1.92	2.57	3.77	5.82	3.63	1.18%	5.82	1.27%	3.63	1.18%	5.82	1.27%
Reading	3.07	2.84	3.71	4.72	3.10	2.27	2.11	1.94	1.70	2.15	2.83	4.80	2.94	0.95%	4.80	1.04%	2.94	0.95%	4.80	1.04%
Revere	6.99	7.08	7.10	9.08	6.78	5.71	6.48	5.35	5.21	6.43	7.59	10.03	6.99	2.26%	10.03	2.18%	6.99	2.26%	10.03	2.18%
Somerville	10.91	10.77	11.50	12.41	9.77	7.93	10.36	7.67	7.26	9.84	11.54	17.70	10.65	3.45%	17.70	3.85%	10.65	3.45%	17.70	3.85%
Stoneham	3.49	2.97	3.71	4.48	2.94	2.44	2.69	2.42	2.10	2.49	2.99	5.92	3.22	1.04%	5.92	1.29%	3.22	1.04%	5.92	1.29%
Stoughton	3.04	2.92	3.10	5.10	3.60	2.65	2.14	1.88	1.77	2.28	3.42	5.14	3.09	1.00%	5.14	1.12%	3.09	1.00%	5.14	1.12%
Wakefield	3.97	3.60	5.65	6.40	4.30	3.14	3.19	2.89	2.34	2.88	4.02	8.28	4.23	1.37%	8.28	1.80%	4.23	1.37%	8.28	1.80%
Walpole	2.21	2.10	2.28	2.87	2.01	1.64	1.48	1.31	1.25	1.44	1.80	2.64	1.92	0.62%	2.87	0.62%	1.92	0.62%	2.87	0.62%
Waltham	9.30	8.59	10.21	11.62	9.43	7.52	7.90	6.87	6.76	7.25	8.24	13.33	8.93	2.89%	13.33	2.90%	8.93	2.89%	13.33	2.90%
Watertown	3.71	3.46	3.98	4.75	3.41	2.73	2.76	2.55	2.37	2.58	3.12	5.29	3.39	1.10%	5.29	1.15%	3.39	1.10%	5.29	1.15%
Wellesley	3.52	3.17	4.14	5.17	3.58	2.68	2.30	2.00	2.06	2.39	2.83	5.04	3.24	1.05%	5.17	1.13%	3.24	1.05%	5.17	1.13%
Westwood	1.65	1.55	1.76	1.97	1.10	0.89	0.82	0.82	0.92	1.16	1.47	2.23	1.36	0.44%	2.23	0.49%	1.36	0.44%	2.23	0.49%
Weymouth	9.18	9.50	8.40	10.83	7.12	5.09	4.36	4.01	3.70	5.57	8.29	12.81	7.39	2.39%	12.81	2.79%	7.39	2.39%	12.81	2.79%
Wilmington	1.27	1.20	1.39	1.55	1.30	1.15	1.13	1.16	1.21	1.26	1.28	1.63	1.29	0.42%	1.63	0.35%	1.29	0.42%	1.63	0.35%
Winchester	2.36	2.14	3.08	3.60	2.52	1.72	1.74	1.43	1.33	1.50	1.86	4.14	2.29	0.74%	4.14	0.90%	2.29	0.74%	4.14	0.90%
Winthrop	2.07	2.06	2.02	2.30	1.91	1.77	1.76	1.55	1.38	1.76	2.00	2.55	1.93	0.62%	2.55	0.56%	1.93	0.62%	2.55	0.56%
Woburn	8.51	8.29	9.07	10.16	7.87	6.30	6.68	5.22	4.70	5.43	6.09	10.22	7.38	2.39%	10.22	2.22%	7.38	2.39%	10.22	2.22%
System Total	332.68	322.12	349.25	409.57	306.07	257.91	264.79	226.85	212.74	259.52	306.81	457.43	308.83	100.0%	459.36	100.0%	308.83	100.0%	459.36	100.0%

MWRA Wastewater System Performance: CY14 vs. CY13

	Jan	Feb	Mar	Apr	May	Jun	Jul	Aug	Sep	Oct	Nov	Dec	YTD	Annual
CY14 ADF (mgd)	332.68	322.12	349.25	409.57	306.07	257.91	264.79	226.85	212.74	259.52	306.81	457.43	308.83	308.83
CY13 ADF (mgd)	303.86	354.93	459.97	303.66	272.02	456.11	277.16	239.83	231.54	210.96	221.10	268.43	299.48	299.48
Change CY14 vs CY13	9.5%	-9.2%	-24.1%	34.9%	12.5%	-43.5%	-4.5%	-5.4%	-8.1%	23.0%	38.8%	70.4%	3.1%	3.1%
CY14 Rainfall (inches)	2.52	3.97	4.63	3.55	3.01	2.59	5.30	2.45	0.87	6.73	5.16	7.43	48.22	48.22
CY13 Rainfall (inches)	1.29	4.09	3.04	1.66	4.05	10.52	3.69	2.25	2.99	0.85	2.93	4.45	41.82	41.82
Change CY14 vs CY13	96.1%	-2.9%	52.2%	113.6%	-25.8%	-75.4%	43.6%	9.3%	-71.0%	691.6%	75.7%	67.1%	15.3%	15.3%

¹ Flow data is preliminary and subject to change pending additional MWRA and community review.

Massachusetts Water Resources Authority
Average Daily Wastewater Flows (million gallons/day)
CALENDAR YEAR: 2013

MWRA Community	CY2013 Community Average Daily Wastewater Flows ¹												YEAR TO DATE THRU DECEMBER				ANNUAL TOTALS ¹			
	Jan	Feb	Mar	Apr	May	Jun	Jul	Aug	Sep	Oct	Nov	Dec	Average Daily Flow	Percent Share of System	Maximum Month Flow	Percent Share of System	Average Daily Flow	Share of System	Maximum Month Flow	Share of System
Arlington	5.05	5.07	7.41	4.71	3.81	5.83	3.52	3.14	2.92	2.67	2.78	3.56	4.20	1.40%	7.41	1.52%	4.20	1.40%	7.41	1.52%
Ashland	1.31	1.31	1.75	1.27	1.15	1.46	1.10	1.05	1.07	1.07	1.09	1.14	1.23	0.41%	1.75	0.36%	1.23	0.41%	1.75	0.36%
Bedford	2.57	2.50	3.62	2.75	2.35	3.15	2.17	1.98	1.85	1.85	1.83	2.04	2.39	0.80%	3.62	0.74%	2.39	0.80%	3.62	0.74%
Belmont	3.12	3.45	5.42	2.97	2.16	3.83	2.23	2.05	1.80	1.54	1.66	2.23	2.70	0.90%	5.42	1.11%	2.70	0.90%	5.42	1.11%
Boston (BWSC)	84.69	106.51	116.08	84.67	82.05	134.85	86.84	76.06	78.59	69.69	75.26	83.68	89.74	29.97%	134.85	27.59%	89.74	29.97%	134.85	27.59%
Braintree	6.42	7.87	10.99	7.20	5.88	10.25	5.99	5.02	4.43	4.13	4.31	6.12	6.54	2.18%	10.99	2.25%	6.54	2.18%	10.99	2.25%
Brookline	8.62	10.15	13.66	8.96	7.54	14.07	7.90	7.11	6.85	6.20	6.52	8.44	8.82	2.95%	14.07	2.88%	8.82	2.95%	14.07	2.88%
Burlington	3.45	3.48	5.08	3.64	3.11	4.43	3.06	2.83	2.47	2.33	2.25	2.58	3.22	1.08%	5.08	1.04%	3.22	1.08%	5.08	1.04%
Cambridge	15.33	19.72	20.77	15.78	16.29	23.48	17.06	14.93	14.18	12.75	14.28	16.34	16.72	5.58%	23.48	4.80%	16.72	5.58%	23.48	4.80%
Canton	2.74	3.16	4.64	2.72	2.57	4.28	2.90	2.75	2.41	2.28	2.35	2.78	2.96	0.99%	4.64	0.95%	2.96	0.99%	4.64	0.95%
Chelsea	4.09	6.01	6.10	4.38	4.39	7.66	4.56	4.23	3.79	3.41	4.08	5.37	4.83	1.61%	7.66	1.57%	4.83	1.61%	7.66	1.57%
Dedham	3.84	4.32	6.55	3.57	2.87	6.00	2.91	2.46	2.45	2.14	2.11	2.94	3.51	1.17%	6.55	1.34%	3.51	1.17%	6.55	1.34%
Everett	4.82	5.56	6.31	4.65	4.72	7.15	4.77	4.43	4.03	4.13	4.18	5.12	4.98	1.66%	7.15	1.46%	4.98	1.66%	7.15	1.46%
Framingham	7.50	7.57	11.10	8.12	6.99	10.19	6.20	5.64	5.55	5.47	5.47	6.18	7.16	2.39%	11.10	2.27%	7.16	2.39%	11.10	2.27%
Hingham S.D.	1.34	1.65	2.63	1.33	1.04	2.19	1.16	1.00	0.77	0.71	0.72	1.11	1.30	0.43%	2.63	0.54%	1.30	0.43%	2.63	0.54%
Holbrook	1.00	1.13	1.49	0.97	0.84	1.16	0.77	0.74	0.70	0.66	0.68	0.85	0.91	0.31%	1.49	0.30%	0.91	0.31%	1.49	0.30%
Lexington	5.14	5.19	9.83	6.25	4.70	7.76	4.62	3.40	2.92	2.61	2.65	3.14	4.85	1.62%	9.83	2.01%	4.85	1.62%	9.83	2.01%
Malden	9.23	9.95	12.77	8.69	7.54	12.13	7.50	6.78	6.36	6.03	6.16	7.91	8.41	2.81%	12.77	2.61%	8.41	2.81%	12.77	2.61%
Medford	7.94	8.86	12.12	7.74	6.69	11.74	6.67	5.67	5.26	4.79	5.04	6.75	7.43	2.48%	12.12	2.48%	7.43	2.48%	12.12	2.48%
Melrose	4.73	4.84	8.40	4.19	3.37	6.40	3.49	2.81	2.64	2.45	2.41	3.44	4.09	1.37%	8.40	1.72%	4.09	1.37%	8.40	1.72%
Milton	3.10	3.86	6.67	3.34	2.56	5.89	2.48	2.06	1.86	1.68	1.75	2.70	3.16	1.05%	6.67	1.36%	3.16	1.05%	6.67	1.36%
Natick	3.29	3.33	4.78	3.23	2.74	4.42	2.75	2.33	2.44	2.13	2.05	2.55	3.00	1.00%	4.78	0.98%	3.00	1.00%	4.78	0.98%
Needham	3.72	3.87	6.40	3.70	2.92	5.50	2.81	2.34	2.58	2.26	2.18	3.04	3.44	1.15%	6.40	1.31%	3.44	1.15%	6.40	1.31%
Newton	17.16	18.22	25.48	14.33	12.25	23.29	12.51	10.05	9.37	8.23	8.18	11.18	14.16	4.73%	25.48	5.21%	14.16	4.73%	25.48	5.21%
Norwood	5.38	6.15	9.01	5.18	4.48	8.41	4.21	3.78	3.68	3.14	3.35	4.57	5.10	1.70%	9.01	1.84%	5.10	1.70%	9.01	1.84%
Quincy	12.64	14.83	21.39	13.80	12.19	20.42	13.74	11.47	10.58	9.57	9.45	11.94	13.49	4.50%	21.39	4.38%	13.49	4.50%	21.39	4.38%
Randolph	3.78	4.35	7.13	3.83	3.12	5.49	3.21	2.77	2.40	2.16	2.25	2.98	3.62	1.21%	7.13	1.46%	3.62	1.21%	7.13	1.46%
Reading	3.17	3.07	5.03	3.20	2.55	4.05	2.54	1.94	1.80	1.73	1.77	2.30	2.76	0.92%	5.03	1.03%	2.76	0.92%	5.03	1.03%
Revere	6.58	8.06	10.01	6.27	5.22	10.58	6.16	5.40	4.44	4.33	4.69	5.82	6.45	2.15%	10.58	2.17%	6.45	2.15%	10.58	2.17%
Somerville	9.42	14.64	13.69	9.42	10.71	17.40	8.39	7.54	7.67	7.17	7.42	10.17	10.27	3.43%	17.40	3.56%	10.27	3.43%	17.40	3.56%
Stoneham	3.46	3.59	5.39	3.10	2.46	4.97	2.47	2.00	1.95	1.79	1.78	2.37	2.94	0.98%	5.39	1.10%	2.94	0.98%	5.39	1.10%
Stoughton	2.68	2.96	5.01	3.01	2.28	4.07	2.39	1.88	1.82	1.60	1.66	2.22	2.63	0.88%	5.01	1.03%	2.63	0.88%	5.01	1.03%
Wakefield	4.32	4.24	7.15	4.32	3.23	6.16	3.44	2.47	2.20	2.05	2.12	2.68	3.69	1.23%	7.15	1.46%	3.69	1.23%	7.15	1.46%
Walpole	2.14	2.12	3.18	2.21	1.84	2.80	1.88	1.62	1.48	1.38	1.41	1.76	1.98	0.66%	3.18	0.65%	1.98	0.66%	3.18	0.65%
Waltham	9.87	10.14	14.12	9.34	8.16	12.68	7.78	6.66	6.29	5.97	6.13	7.22	8.69	2.90%	14.12	2.89%	8.69	2.90%	14.12	2.89%
Watertown	3.60	3.85	5.41	3.50	2.92	4.92	3.04	2.66	2.51	2.33	2.37	2.76	3.32	1.11%	5.41	1.11%	3.32	1.11%	5.41	1.11%
Wellesley	3.48	3.62	5.80	3.55	2.83	5.14	2.63	2.24	2.53	2.20	2.14	2.62	3.23	1.08%	5.80	1.19%	3.23	1.08%	5.80	1.19%
Westwood	1.47	1.51	2.34	1.47	1.26	2.30	1.22	1.06	1.06	0.98	0.97	1.18	1.40	0.47%	2.34	0.48%	1.40	0.47%	2.34	0.48%
Weymouth	7.98	10.07	15.02	8.14	6.67	11.76	6.55	5.84	4.84	4.52	4.65	6.24	7.67	2.56%	15.02	3.07%	7.67	2.56%	15.02	3.07%
Wilmington	1.22	1.25	1.48	1.29	1.18	1.33	1.11	1.08	1.06	1.11	1.07	1.08	1.19	0.40%	1.48	0.30%	1.19	0.40%	1.48	0.30%
Winchester	2.64	2.47	4.41	2.65	1.84	3.58	1.78	1.44	1.30	1.18	1.18	1.55	2.17	0.72%	4.41	0.90%	2.17	0.72%	4.41	0.90%
Winthrop	1.78	2.28	2.74	1.85	1.71	2.88	1.90	1.68	1.56	1.50	1.51	1.81	1.93	0.64%	2.88	0.59%	1.93	0.64%	2.88	0.59%
Woburn	8.05	8.15	11.61	8.37	6.84	10.06	6.75	5.44	5.08	5.04	5.19	5.97	7.21	2.41%	11.61	2.38%	7.21	2.41%	11.61	2.38%
System Total	303.86	354.93	459.97	303.66	272.02	456.11	277.16	239.83	231.54	210.96	221.10	268.43	299.48	100.0%	488.68	100.0%	299.48	100.0%	488.68	100.0%

MWRA Wastewater System Performance: CY13 vs. CY12

	Jan	Feb	Mar	Apr	May	Jun	Jul	Aug	Sep	Oct	Nov	Dec	YTD	Annual
CY13 ADF (mgd)	303.86	354.93	459.97	303.66	272.02	456.11	277.16	239.83	231.54	210.96	221.10	268.43	299.48	299.48
CY12 ADF (mgd)	316.84	279.51	281.93	270.97	296.86	287.85	246.67	249.40	252.03	255.59	263.00	331.25	277.75	277.75
Change CY13 vs CY12	-4.1%	27.0%	63.2%	12.1%	-8.4%	58.5%	12.4%	-3.8%	-8.1%	-17.5%	-15.9%	-19.0%	7.8%	7.8%
CY13 Rainfall (inches)	1.29	4.09	3.04	1.66	4.05	10.52	3.69	2.25	2.99	0.85	2.93	4.45	41.82	41.82
CY12 Rainfall (inches)	3.07	0.99	1.46	3.57	3.95	4.68	3.61	3.56	3.84	4.70	1.11	6.05	40.58	40.58
Change CY13 vs CY12	-58.1%	314.8%	108.5%	-53.5%	2.7%	124.8%	2.3%	-36.9%	-22.0%	-81.9%	165.2%	-26.5%	3.1%	3.1%

¹ Flow data is preliminary and subject to change pending additional MWRA and community review.

Massachusetts Water Resources Authority
 Average Daily Wastewater Flows (million gallons/day)
CALENDAR YEAR: 2012

MWRA Community	CY2012 Community Average Daily Wastewater Flows ¹												YEAR TO DATE THRU DECEMBER				ANNUAL TOTALS ¹			
	Jan	Feb	Mar	Apr	May	Jun	Jul	Aug	Sep	Oct	Nov	Dec	Average Daily Flow	Percent Share of System	Maximum Month Flow	Percent Share of System	Average Daily Flow	Share of System	Maximum Month Flow	Share of System
Arlington	5.24	4.73	4.69	3.94	4.55	4.25	3.09	3.28	3.11	3.47	3.90	4.92	4.10	1.48%	5.24	1.54%	4.10	1.48%	5.24	1.54%
Ashland	1.32	1.23	1.17	1.04	1.10	1.01	0.86	0.89	0.99	1.14	1.21	1.25	1.10	0.40%	1.32	0.39%	1.10	0.40%	1.32	0.39%
Bedford	2.79	2.67	2.64	2.34	2.50	2.21	1.90	1.87	1.76	1.97	2.17	2.31	2.26	0.81%	2.79	0.82%	2.26	0.81%	2.79	0.82%
Belmont	3.35	2.77	2.50	2.30	2.82	2.68	2.06	2.17	1.96	2.20	2.48	3.21	2.54	0.92%	3.35	0.98%	2.54	0.92%	3.35	0.98%
Boston (BWSC)	92.15	80.55	80.27	85.02	89.34	91.72	85.53	85.70	91.53	85.65	78.77	101.45	87.35	31.45%	101.45	29.81%	87.35	31.45%	101.45	29.81%
Braintree	6.94	6.16	6.22	5.47	6.14	5.73	4.48	4.88	4.41	4.72	5.47	6.37	5.58	2.01%	6.94	2.04%	5.58	2.01%	6.94	2.04%
Brookline	9.89	8.92	9.22	8.30	9.47	8.87	7.65	7.30	7.16	7.16	7.28	9.56	8.40	3.02%	9.89	2.91%	8.40	3.02%	9.89	2.91%
Burlington	3.70	3.41	3.37	2.98	3.34	3.03	2.39	2.43	2.30	2.45	2.74	3.12	2.94	1.06%	3.70	1.09%	2.94	1.06%	3.70	1.09%
Cambridge	15.73	13.88	14.30	15.03	16.34	17.02	14.97	14.61	16.05	16.67	13.99	19.68	15.70	5.65%	19.68	5.78%	15.70	5.65%	19.68	5.78%
Canton	2.67	2.37	2.23	2.23	2.39	2.14	1.86	1.88	2.04	2.18	2.44	2.74	2.26	0.82%	2.74	0.81%	2.26	0.82%	2.74	0.81%
Chelsea	4.78	3.90	4.11	4.29	4.54	4.79	3.92	3.93	4.26	4.13	3.82	5.90	4.37	1.57%	5.90	1.73%	4.37	1.57%	5.90	1.73%
Dedham	3.44	3.24	3.20	2.79	3.23	2.79	2.34	2.39	2.16	2.29	2.93	3.63	2.87	1.03%	3.63	1.07%	2.87	1.03%	3.63	1.07%
Everett	5.66	5.14	5.37	5.27	5.65	5.47	4.46	4.37	4.55	4.49	6.24	5.10	5.10	1.84%	6.24	1.83%	5.10	1.84%	6.24	1.83%
Framingham	6.54	5.84	5.88	5.43	5.86	5.16	4.56	4.67	4.70	5.88	6.58	6.75	5.66	2.04%	6.75	1.98%	5.66	2.04%	6.75	1.98%
Hingham S.D.	1.33	1.13	1.17	0.97	1.16	1.08	0.84	0.82	0.77	0.84	1.02	1.38	1.04	0.38%	1.38	0.41%	1.04	0.38%	1.38	0.41%
Holbrook	0.76	0.69	0.71	0.68	0.75	0.71	0.59	0.57	0.64	0.69	0.89	1.04	0.73	0.26%	1.04	0.31%	0.73	0.26%	1.04	0.31%
Lexington	5.61	5.16	5.01	4.35	5.07	4.63	3.27	3.12	3.06	3.35	4.23	4.83	4.31	1.55%	5.61	1.65%	4.31	1.55%	5.61	1.65%
Malden	9.17	8.30	8.34	7.90	8.59	8.64	7.50	7.55	7.07	7.21	7.84	9.93	8.17	2.94%	9.93	2.92%	8.17	2.94%	9.93	2.92%
Medford	7.64	6.62	6.92	6.68	7.57	7.49	6.00	5.89	5.73	6.36	6.92	9.50	6.95	2.50%	9.50	2.79%	6.95	2.50%	9.50	2.79%
Melrose	4.68	3.81	4.08	3.55	4.24	4.19	3.22	3.25	3.10	3.37	3.95	5.19	3.89	1.40%	5.19	1.53%	3.89	1.40%	5.19	1.53%
Milton	3.30	2.65	2.71	2.36	2.74	2.29	1.76	1.79	1.68	1.81	2.19	3.07	2.36	0.85%	3.30	0.97%	2.36	0.85%	3.30	0.97%
Natick	3.33	2.95	2.93	2.62	2.91	2.63	2.33	2.29	2.18	2.36	2.87	3.06	2.71	0.97%	3.33	0.98%	2.71	0.97%	3.33	0.98%
Needham	3.37	3.10	3.00	2.80	3.43	2.98	2.45	2.47	2.41	2.36	3.07	3.38	2.90	1.04%	3.43	1.01%	2.90	1.04%	3.43	1.01%
Newton	18.67	15.46	14.91	12.85	14.58	12.78	10.56	11.06	10.14	11.42	13.22	16.56	13.52	4.87%	18.67	5.49%	13.52	4.87%	18.67	5.49%
Norwood	5.02	4.51	4.82	3.99	4.66	4.03	3.30	3.39	3.19	3.52	4.51	5.04	4.17	1.50%	5.04	1.48%	4.17	1.50%	5.04	1.48%
Quincy	13.58	12.25	12.13	11.93	12.82	12.78	10.98	11.13	10.10	10.30	10.96	12.60	11.80	4.25%	13.58	3.99%	11.80	4.25%	13.58	3.99%
Randolph	3.81	3.44	3.44	3.10	3.42	3.18	2.62	2.48	2.33	2.36	2.98	3.47	3.05	1.10%	3.81	1.12%	3.05	1.10%	3.81	1.12%
Reading	3.25	2.85	2.95	2.46	2.85	2.60	2.00	1.93	1.84	2.08	2.45	2.98	2.52	0.91%	3.25	0.96%	2.52	0.91%	3.25	0.96%
Revere	6.93	5.91	6.26	6.24	6.69	7.09	6.25	6.03	5.85	5.74	5.56	7.97	6.38	2.30%	7.97	2.34%	6.38	2.30%	7.97	2.34%
Somerville	10.32	8.23	8.99	9.58	10.61	9.90	7.86	7.96	9.50	9.19	8.12	12.52	9.41	3.39%	12.52	3.68%	9.41	3.39%	12.52	3.68%
Stoneham	3.28	3.04	2.93	2.60	3.24	2.87	2.25	2.11	1.97	2.21	2.73	3.56	2.73	0.98%	3.56	1.05%	2.73	0.98%	3.56	1.05%
Stoughton	2.73	2.64	2.74	2.31	2.64	2.36	1.94	1.88	1.78	1.79	2.19	2.37	2.28	0.82%	2.74	0.81%	2.28	0.82%	2.74	0.81%
Wakefield	4.26	3.83	3.91	3.17	3.87	3.49	2.58	2.53	2.27	2.58	3.19	4.00	3.31	1.19%	4.26	1.25%	3.31	1.19%	4.26	1.25%
Walpole	1.99	1.81	1.71	1.64	1.77	1.58	1.33	1.35	1.42	1.54	2.01	2.00	1.68	0.60%	2.01	0.59%	1.68	0.60%	2.01	0.59%
Waltham	9.45	8.84	8.70	7.96	8.77	8.07	6.93	7.56	7.16	7.56	8.25	9.37	8.22	2.96%	9.45	2.78%	8.22	2.96%	9.45	2.78%
Watertown	3.68	3.39	3.39	2.91	3.21	3.15	2.61	2.78	2.72	2.87	3.06	3.65	3.12	1.12%	3.68	1.08%	3.12	1.12%	3.68	1.08%
Wellesley	3.65	3.29	3.20	2.89	3.39	2.76	2.24	2.31	2.34	2.62	3.14	3.49	2.94	1.06%	3.65	1.07%	2.94	1.06%	3.65	1.07%
Westwood	1.47	1.31	1.33	1.16	1.32	1.17	1.01	1.00	0.94	1.04	1.30	1.39	1.20	0.43%	1.47	0.43%	1.20	0.43%	1.47	0.43%
Weymouth	7.71	6.94	7.26	6.38	7.04	6.81	5.40	5.81	5.50	5.99	7.35	8.41	6.72	2.42%	8.41	2.47%	6.72	2.42%	8.41	2.47%
Wilmington	1.28	1.28	1.28	1.13	1.35	1.19	1.03	1.14	1.07	1.15	1.16	1.11	1.18	0.43%	1.35	0.40%	1.18	0.43%	1.35	0.40%
Winchester	2.49	2.21	2.15	1.75	2.15	1.93	1.37	1.46	1.38	1.50	1.81	2.43	1.89	0.68%	2.49	0.73%	1.89	0.68%	2.49	0.73%
Winthrop	2.09	1.81	1.88	1.93	1.89	2.07	1.71	1.71	1.67	1.66	1.73	2.13	1.86	0.67%	2.13	0.63%	1.86	0.67%	2.13	0.63%
Woburn	7.79	7.25	7.91	6.65	6.86	6.53	4.67	5.66	5.24	5.72	6.03	7.69	6.50	2.34%	7.91	2.32%	6.50	2.34%	7.91	2.32%
System Total	316.84	279.51	281.93	270.97	296.86	287.85	246.67	249.40	252.03	255.59	263.00	331.25	277.75	100.0%	340.28	100.0%	277.75	100.0%	340.28	100.0%

MWRA Wastewater System Performance: CY12 vs. CY11

	Jan	Feb	Mar	Apr	May	Jun	Jul	Aug	Sep	Oct	Nov	Dec	YTD	Annual
CY12 ADF (mgd)	316.84	279.51	281.93	270.97	296.86	287.85	246.67	249.40	252.03	255.59	263.00	331.25	277.75	277.75
CY11 ADF (mgd)	293.05	389.02	465.74	390.15	318.07	293.94	245.47	326.34	339.93	425.38	389.64	385.48	354.93	354.93
Change CY12 vs CY11	8.1%	-28.2%	-39.5%	-30.5%	-6.7%	-2.1%	0.5%	-23.6%	-25.9%	-39.9%	-32.5%	-14.1%	-21.7%	-21.7%
CY12 Rainfall (inches)	3.07	0.99	1.46	3.57	3.95	4.68	3.61	3.56	3.84	4.70	1.11	6.05	40.58	40.58
CY11 Rainfall (inches)	4.29	4.87	2.34	4.49	3.10	5.14	1.91	9.89	5.31	7.90	4.19	3.78	57.23	57.23
Change CY12 vs CY11	-28.5%	-79.8%	-37.7%	-20.4%	27.2%	-9.0%	88.6%	-64.0%	-27.8%	-40.5%	-73.6%	60.0%	-29.1%	-29.1%

¹ Flow data is preliminary and subject to change pending additional MWRA and community review.