The seal of the Metropolitan Water Resources Advisory Board is a large, light blue circular emblem in the background. It features the text "REPRESENTING 60 CITIES & COUNTIES" around the top inner edge and "MWRRA ADVISORY BOARD" in the center. At the bottom of the seal is a wavy line representing water. The main title of the slide is overlaid on the seal.

2012 Annual Water and Sewer Retail Rate Survey Preview

November 15, 2012

Presentation to the Advisory Board

Where Were We Last Year?

- MWRA final wholesale assessments increased 3.49% in FY12
- Average MWRA community household charge ranges from \$865 - \$1,298
 - Monthly = \$72 - \$108
- Average MWRA community retail rate increase was 3.5%
- From 2001-2011 MWRA community retail rates have increased 73%
 - Average annual increase = 5.6%
 - CPI average = 2.5%



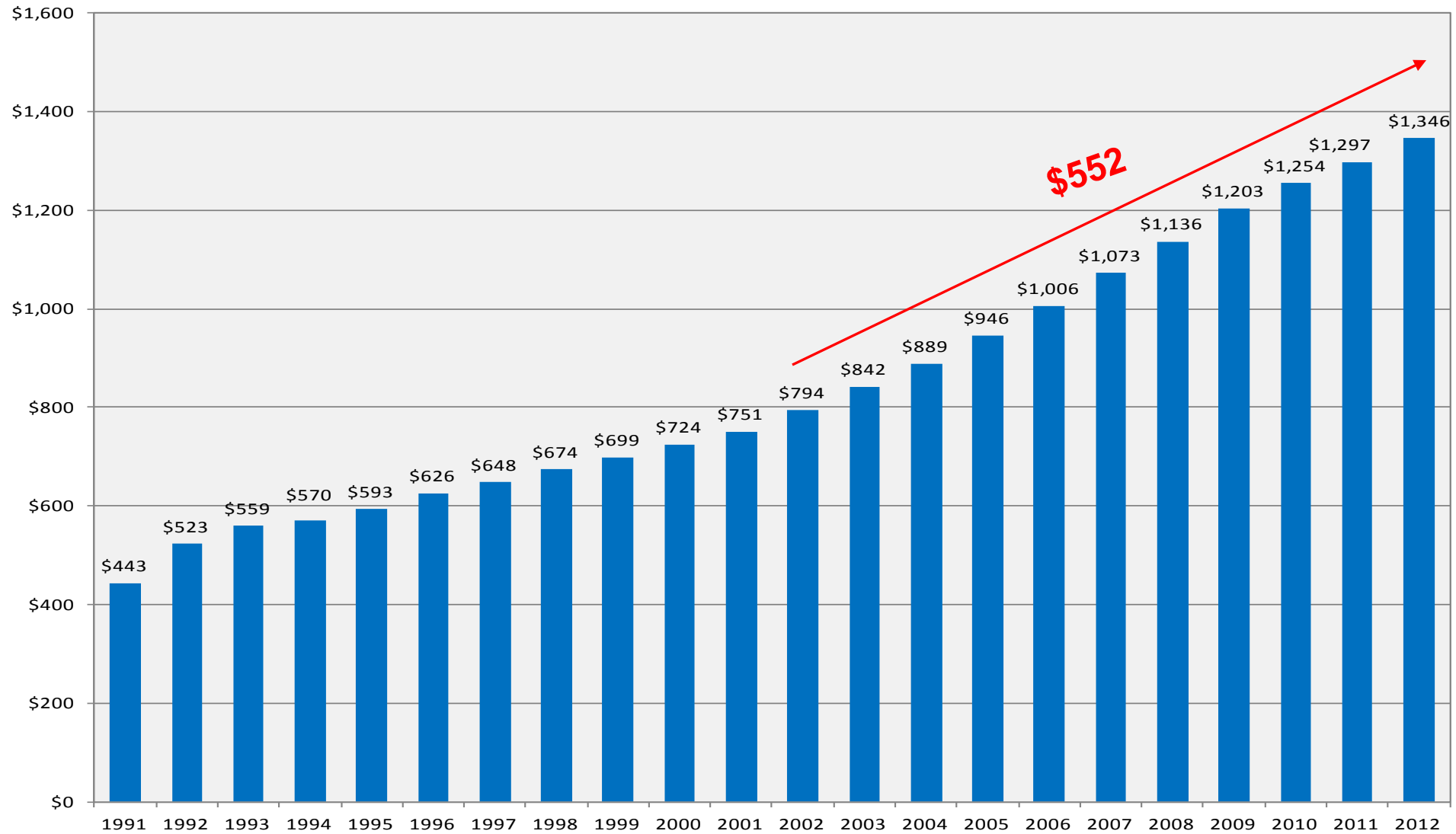
Where Are We Now?

- MWRA final wholesale assessments increased 3.0% in FY13
- Average MWRA community household charge ranges from \$897 - \$1,346
 - Monthly = \$75 - \$112
- Average MWRA community retail rate increase is 3.8%
 - 27 communities with no increases
- From 2002-2012 MWRA community retail rates have increased 70%
 - Average annual increase = 5.4%

Average Combined Annual Water & Sewer Residential Cost in MWRA Communities

1991-2012

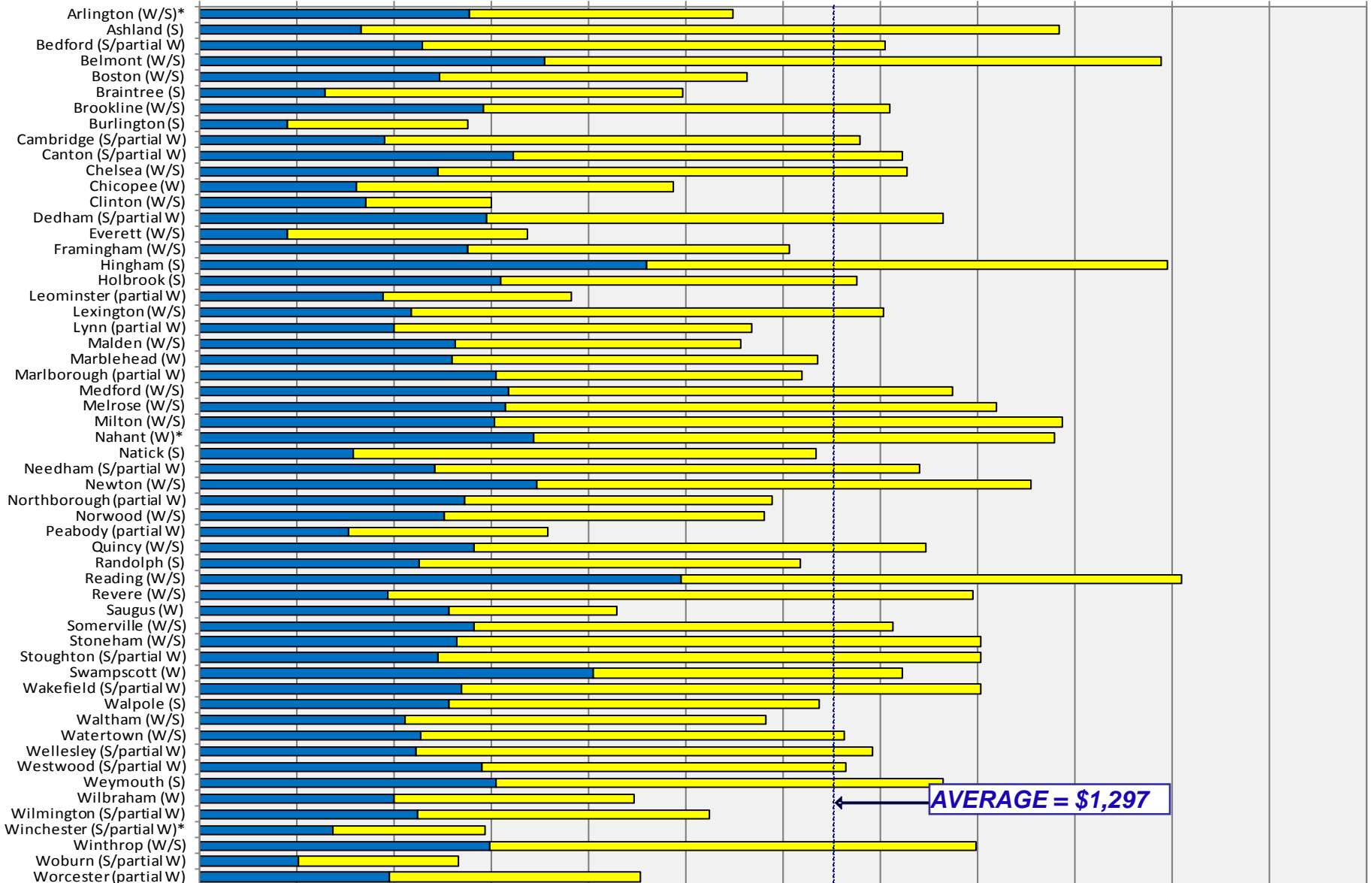
(120 HCF \approx 90,000 gallons per year)



2011 Annual Residential Cost (MWRA)

(120 HCF ≈ 90,000 gallons per year)

\$0 \$200 \$400 \$600 \$800 \$1,000 \$1,200 \$1,400 \$1,600 \$1,800 \$2,000 \$2,200 \$2,400

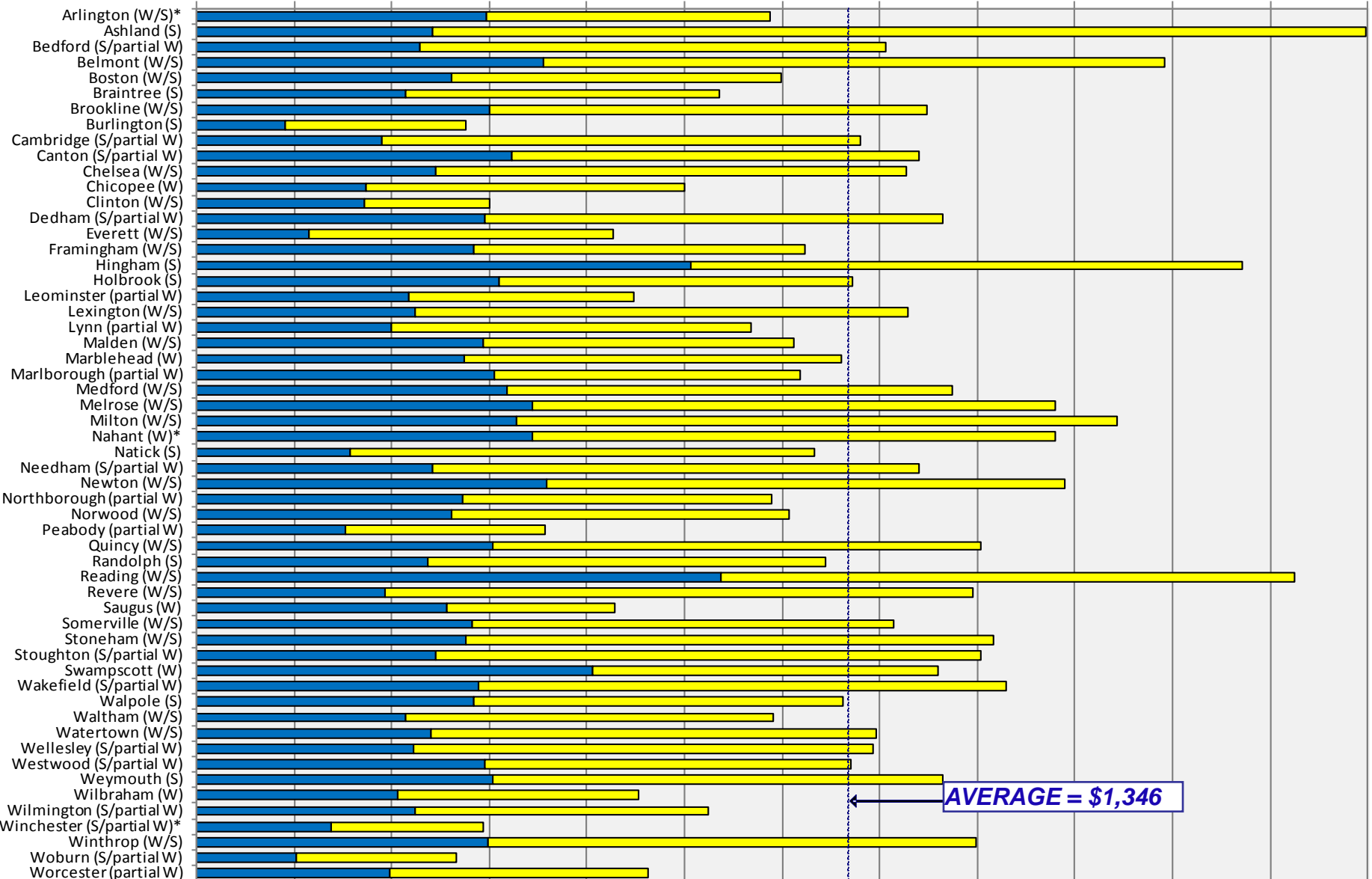


AVERAGE = \$1,297

2012 Annual Residential Cost (MWRA)

(120 HCF ≈ 90,000 gallons per year)

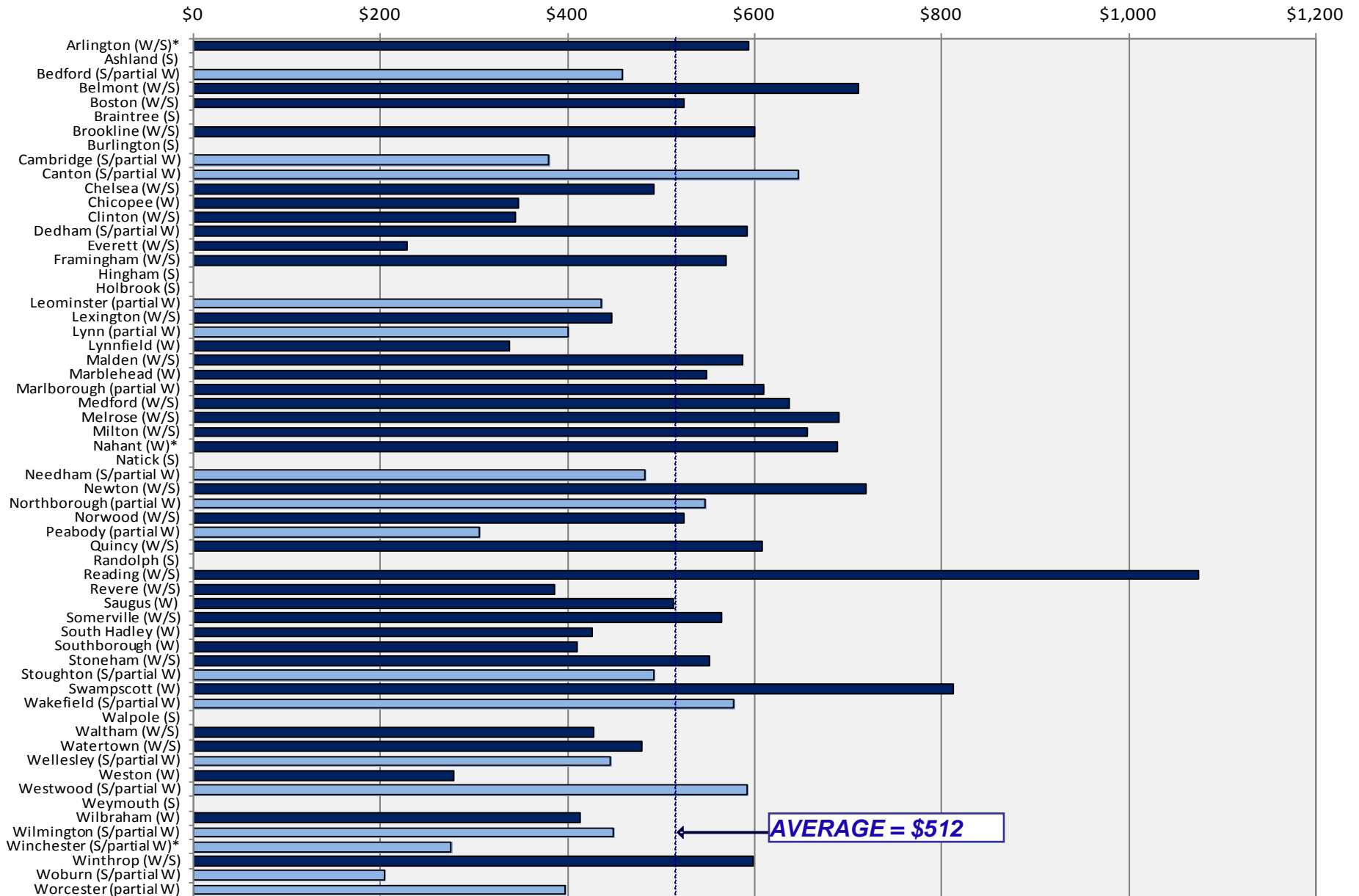
\$0 \$200 \$400 \$600 \$800 \$1,000 \$1,200 \$1,400 \$1,600 \$1,800 \$2,000 \$2,200 \$2,400



AVERAGE = \$1,346

2012 Annual MWRA-Only Water Costs

(120 HCF ≈ 90,000 gallons per year)

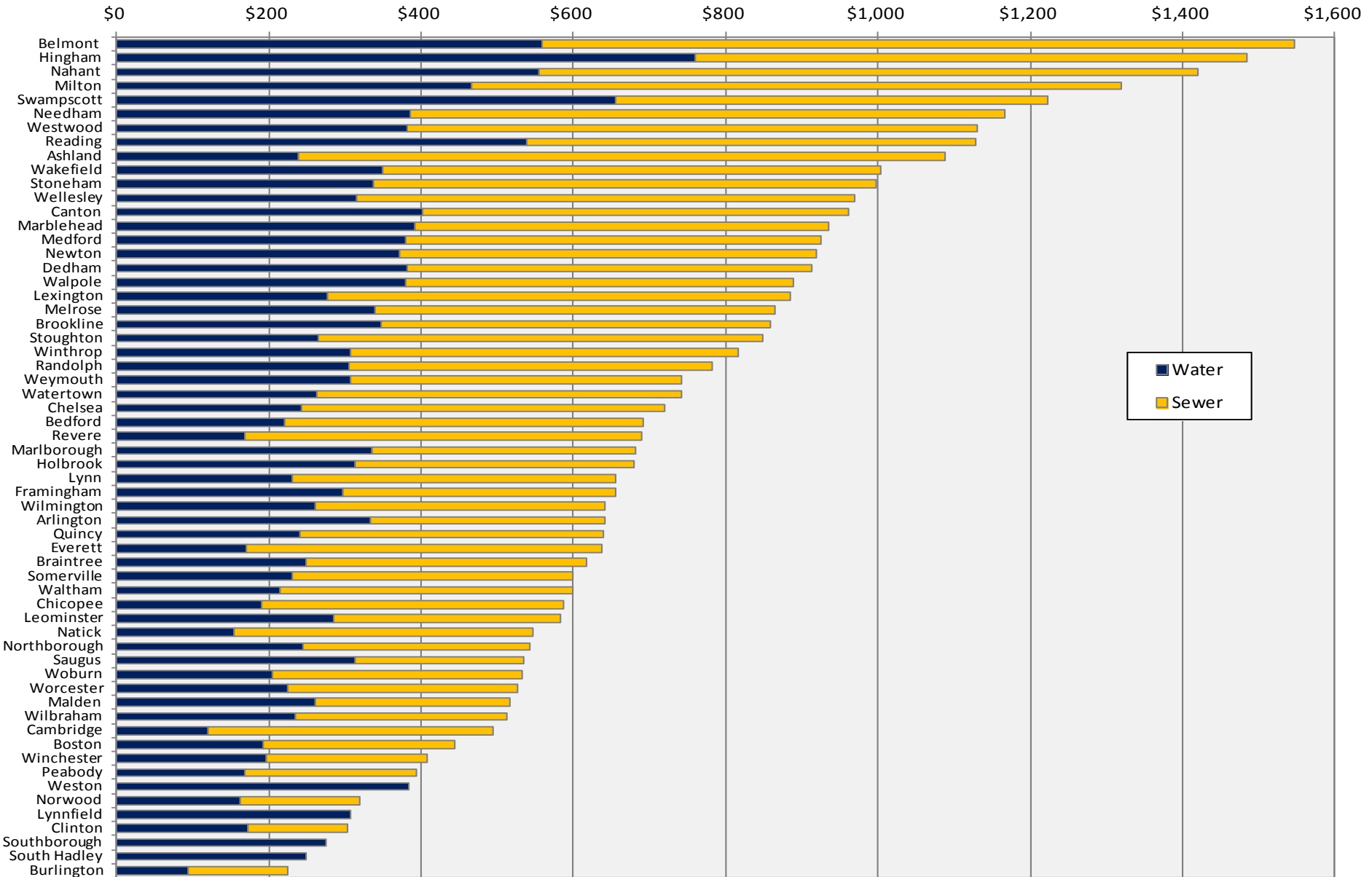


2012 Annual MWRA-Only Sewer Costs

(120 HCF ≈ 90,000 gallons per year)

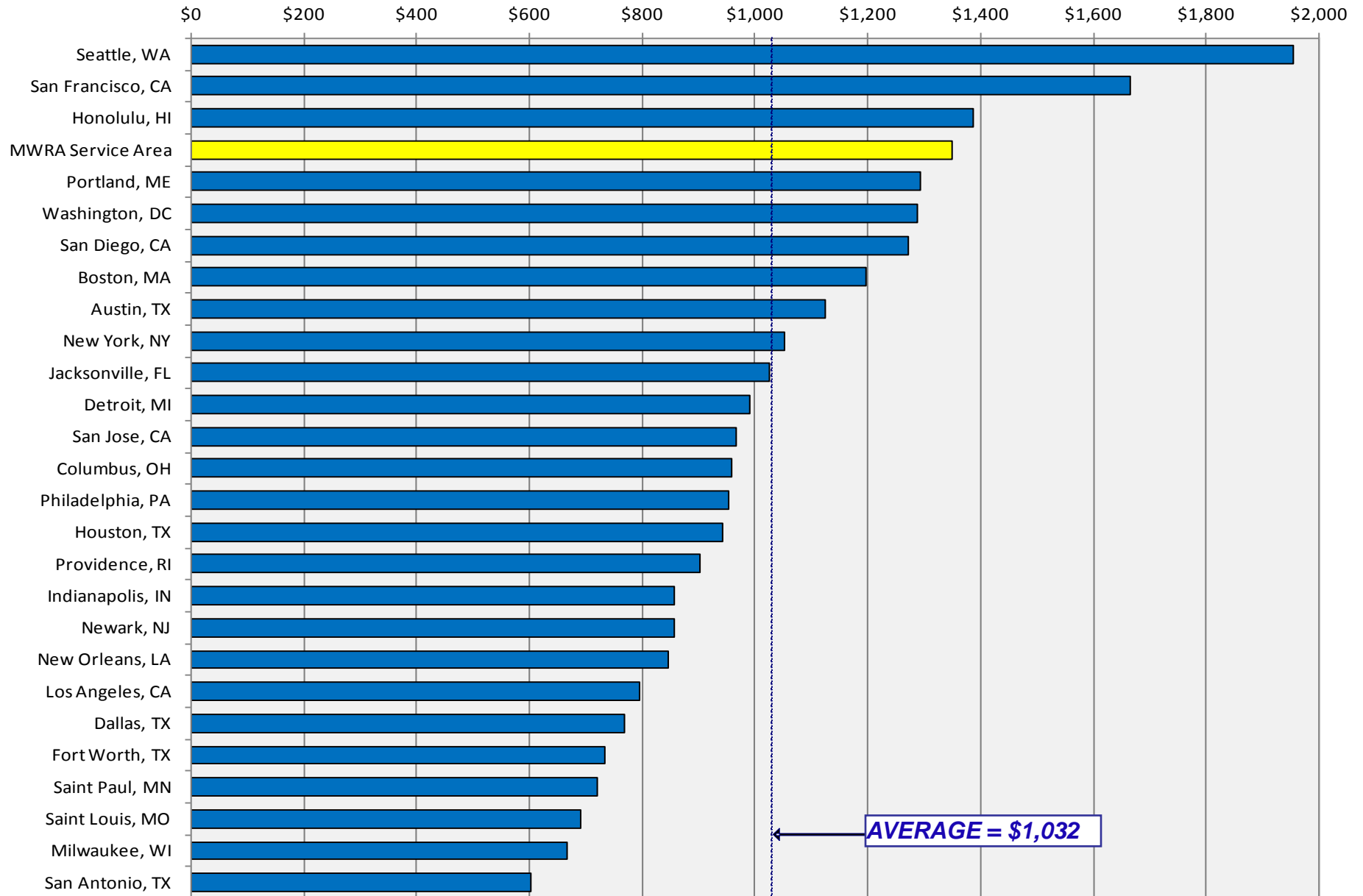


2012 Residential Costs Based on Actual Usage



2012 Comparison to Other U.S. Cities

(120 HCF \approx 90,000 gallons per year)





What's Next?

- Proofs will be sent to communities
- Proof sent to printer after changes received
- Final mailed to communities

